

Active Recombinant Human CNTFR protein, His-tagged

Cat. No. CNTFR-3334H **Lot. No.** (See product label)

SPECIFICATION

Product Overview	Active Recombinant Human CNTFR protein(Met 1- 346)(NP_001833.1) was expressed in Insect Cells, fused with a polyhistidine tag at the C-terminus.
Species	Human
Source	Insect Cells
ProteinLength	1-346 aa
Form	Lyophilized from sterile 50mM Tris, 100mM NaCl, pH 8.0
Bio-activity	Measured by its binding ability in a functional ELISA. Immobilized human CNTFR at 10 µg/ml (100 µl/well) can bind biotinylated human CNTF with a linear ranger of 1.28-160 ng/ml.
Molecular Mass	The recombinant human CNTFR consists of 335 amino acids and predicts a molecular mass of 36 kDa. The apparent molecular mass of rhCNTFR is apximately 45-48 kDa in SDS-PAGE under reducing conditions.
Endotoxin	< 1.0 EU per µg of the protein as determined by the LAL method.
Purity	> 98 % as determined by SDS-PAGE
Storage	Store it under sterile conditions at -20°C to -80°C upon receiving. Recommend to aliquot the protein into smaller quantities for optimal storage. Avoid repeated freeze-

 Tel: 1-631-559-9269 1-516-512-3133

 Email: info@creative-biomart.com  Fax: 1-631-938-8127

 45-1 Ramsey Road, Shirley, NY 11967, USA

thaw cycles.

Reconstitution

It is recommended that sterile water be added to the vial to prepare a stock solution of 0.2 ug/ul. Centrifuge the vial at 4°C before opening to recover the entire contents.

protein Refseq-Weblink

http://www.ncbi.nlm.nih.gov/protein/NP_001193940.1

Unit ID

P26992

Unit ID-Weblink

<http://www.uniprot.org/uniprot/P26992>

GENE INFORMATION

Gene Name

CNTFR ciliary neurotrophic factor receptor [Homo sapiens]

Official Symbol

CNTFR

Synonyms

CNTFR; ciliary neurotrophic factor receptor; ciliary neurotrophic factor receptor subunit alpha; CNTFR-alpha; CNTF receptor subunit alpha; MGC1774;

Gene ID

1271

mRNA Refseq

NM_001207011

protein Refseq

NP_001193940

MIM

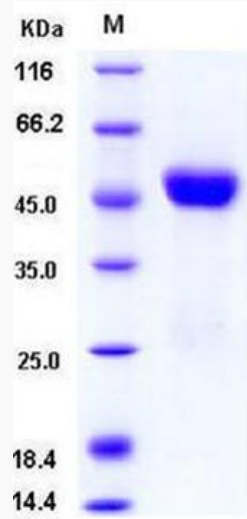
118946

 Tel: 1-631-559-9269 1-516-512-3133

 Email: info@creative-biomart.com  Fax: 1-631-938-8127

 45-1 Ramsey Road, Shirley, NY 11967, USA

SDS-PAGE



 Tel: 1-631-559-9269 1-516-512-3133

 Email: info@creative-biomart.com  Fax: 1-631-938-8127

 45-1 Ramsey Road, Shirley, NY 11967, USA