

## Recombinant Human CNTFR protein, His-tagged

Cat. No. CNTFR-361H Lot. No. (See product label)

### SPECIFICATION

<b>Product Overview</b>	Recombinant Human CNTFR protein (Gln23-Pro346), fused to His tag at C-terminus, was expressed in human 293 cells (HEK293).
<b>Species</b>	Human
<b>Source</b>	HEK293
<b>ProteinLength</b>	324
<b>Description</b>	Ciliary neurotrophic factor receptor subunit alpha (CNTFR or CNTFR-alpha) belongs to the type I cytokine receptor family and type 3 subfamily. CNTFR contains two fibronectin type-III domains and one Ig-like C2-type (immunoglobulin-like) domain. This receptor and its cognate ligand support the survival of neurons. This receptor is most closely related to the interleukin-6 receptor. This receptor possesses an unusual attachment to the cell membrane through a glycoposphatidylinositol linkage.
<b>Form</b>	Lyophilized from 0.22 um filtered solution in PBS, pH7.4, 10% trehalose.
<b>Molecular Mass</b>	The protein has a calculated MW of 36.9 kDa. The protein migrates as 45-66 kDa under reducing (R) condition (SDS-PAGE) due to glycosylation.
<b>Endotoxin</b>	Less than 1.0 EU per ug by the LAL method.
<b>Purity</b>	>95% as determined by SDS-PAGE.

 Tel: 1-631-559-9269 1-516-512-3133

 Email: [info@creative-biomart.com](mailto:info@creative-biomart.com)  Fax: 1-631-938-8127

 45-1 Ramsey Road, Shirley, NY 11967, USA

**Storage**

For long term storage, the product should be stored at lyophilized state at -20 centigrade or lower.

Please avoid repeated freeze-thaw cycles.

This product is stable after storage at:

- 20 centigrade to -70 centigrade for 12 months in lyophilized state;
- 70 centigrade for 3 months under sterile conditions after reconstitution.

**Reconstitution**

It is recommended that sterile water be added to the vial to prepare a stock solution of 0.2 ug/ul. Centrifuge the vial at 4°C before opening to recover the entire contents.

## GENE INFORMATION

**Gene Name** CNTFR

**Official Symbol** CNTFR

**Synonyms** CNTFR; ciliary neurotrophic factor receptor; ciliary neurotrophic factor receptor subunit alpha; CNTFR-alpha; CNTF receptor subunit alpha; MGC1774

**Gene ID** 1271

**mRNA Refseq** NM\_001207011

**Protein Refseq** NP\_001193940

**MIM** 118946

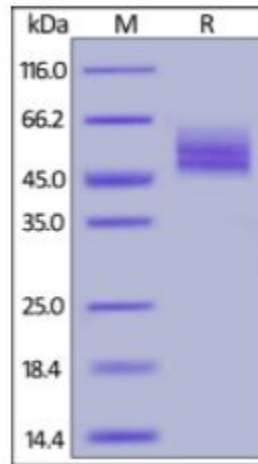
**UniProt ID** P26992

 Tel: 1-631-559-9269 1-516-512-3133

 Email: [info@creative-biomart.com](mailto:info@creative-biomart.com)  Fax: 1-631-938-8127

 45-1 Ramsey Road, Shirley, NY 11967, USA

**SDS-PAGE of  
CNTFR-361H**



Human CNTFR alpha, His Tag on SDS-PAGE under reducing (R) condition. The gel was stained overnight with Coomassie Blue. The purity of the protein is greater than 95%.

 Tel: 1-631-559-9269 1-516-512-3133

 Email: [info@creative-biomart.com](mailto:info@creative-biomart.com)  Fax: 1-631-938-8127

 45-1 Ramsey Road, Shirley, NY 11967, USA