

Active Recombinant Human CNTN2 protein, His-tagged

Cat. No. CNTN2-020H Lot. No. (See product label)

SPECIFICATION

Product Overview	Active Recombinant Human CNTN2 protein(NP_005067.1) precursor (Met 1-Asn 1012) was expressed in HEK293 with a polyhistidine tag at the C-terminus.
Species	Human
Source	HEK293
ProteinLength	1-1012 aa
Form	Lyophilized from sterile 100mM Glycine, 10mM NaCl, 50mM Tris, pH 7.5.
Bio-activity	Measured by the ability of the immobilized protein to support the adhesion of C6 Rat brain glial cells. When 5 x 10E4 cells/well are added to CNTN2 coated plates (0.8 µg/ml and 100 µl/well), approximately 40%-60% will adhere specifically after 60 minutes at 37 °C.
Molecular Mass	The secreted recombinant human CNTN2 is a monomeric protein after cleavage of the signal peptide. It consists of 993 amino acids and predicts a molecular mass of 109 kDa. In SDS-PAGE under reducing conditions, it migrates with the apparent molecular mass of 140 kDa due to glycosylation.
Endotoxin	< 1.0 EU per µg protein as determined by the LAL method.
Purity	> 95 % as determined by SDS-PAGE

 Tel: 1-631-559-9269 1-516-512-3133

 Email: info@creative-biomart.com  Fax: 1-631-938-8127

 45-1 Ramsey Road, Shirley, NY 11967, USA

Storage Store it under sterile conditions at -20°C to -80°C upon receiving. Recommend to aliquot the protein into smaller quantities for optimal storage. Avoid repeated freeze-thaw cycles.

Reconstitution It is recommended that sterile water be added to the vial to prepare a stock solution of 0.2 ug/ul. Centrifuge the vial at 4°C before opening to recover the entire contents.

GENE INFORMATION

Gene Name CNTN2 contactin 2 (axonal) [Homo sapiens]

Official Symbol CNTN2

Synonyms CNTN2; contactin 2 (axonal); AXT, TAX; contactin-2; TAG 1; TAX1; TAX-1; axonal glycoprotein TAG-1; axonin-1 cell adhesion molecule; transient axonal glycoprotein 1; contactin 2 (transiently expressed); transiently-expressed axonal glycoprotein; AXT; TAX; TAG-1; FLJ37193; FLJ42746; MGC157722; DKFZp781D102;

Gene ID 6900

mRNA Refseq NM_005076

Protein Refseq NP_005067

MIM 190197

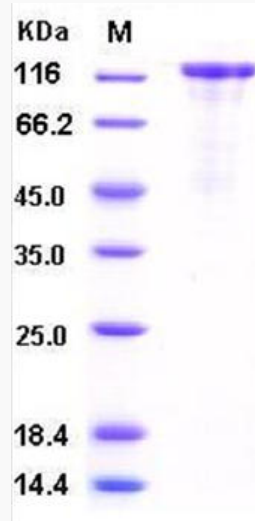
UniProt ID Q02246

 Tel: 1-631-559-9269 1-516-512-3133

 Email: info@creative-biomart.com  Fax: 1-631-938-8127

 45-1 Ramsey Road, Shirley, NY 11967, USA

SDS-PAGE



 Tel: 1-631-559-9269 1-516-512-3133

 Email: info@creative-biomart.com  Fax: 1-631-938-8127

 45-1 Ramsey Road, Shirley, NY 11967, USA