

## Recombinant Human CNTN2 Protein, GST-tagged

Cat. No. CNTN2-1608H Lot. No. (See product label)

### SPECIFICATION

<b>Product Overview</b>	Human CNTN2 partial ORF ( NP_005067, 825 a.a. - 923 a.a.) recombinant protein with GST-tag at N-terminal.
<b>Species</b>	Human
<b>Source</b>	Wheat Germ
<b>Description</b>	This gene encodes a member of the contactin family of proteins, part of the immunoglobulin superfamily of cell adhesion molecules. The encoded glycosylphosphatidylinositol (GPI)-anchored neuronal membrane protein plays a role in the proliferation, migration, and axon guidance of neurons of the developing cerebellum. A mutation in this gene may be associated with adult myoclonic epilepsy. [provided by RefSeq, Sep 2016]
<b>Molecular Mass</b>	36.63 kDa
<b>AA Sequence</b>	SSSEMNVTWEPVQQDMNGILLGYEIRYWKAGDKEAAADRVRTAGLDTSARVSLH PNTKYHVTVRAYNRAGTGPASPSANATMKPPRRPPGNISWTF
<b>Applications</b>	Enzyme-linked Immunoabsorbent Assay Western Blot (Recombinant protein) Antibody Production Protein Array
<b>Notes</b>	Best use within three months from the date of receipt of this protein.

 Tel: 1-631-559-9269 1-516-512-3133

 Email: [info@creative-biomart.com](mailto:info@creative-biomart.com)  Fax: 1-631-938-8127

 45-1 Ramsey Road, Shirley, NY 11967, USA

**Storage** Store at -80 centigrade. Aliquot to avoid repeated freezing and thawing.

**Storage Buffer** 50 mM Tris-HCl, 10 mM reduced Glutathione, pH=8.0 in the elution buffer.

## GENE INFORMATION

**Gene Name** CNTN2 contactin 2 (axonal) [ Homo sapiens ]

**Official Symbol** CNTN2

**Synonyms**

CNTN2; contactin 2 (axonal); AXT, TAX; contactin-2; TAG 1; TAX1; TAX-1; axonal glycoprotein TAG-1; axonin-1 cell adhesion molecule; transient axonal glycoprotein 1; contactin 2 (transiently expressed); transiently-expressed axonal glycoprotein; AXT; TAX; TAG-1; FLJ37193; FLJ42746; MGC157722; DKFZp781D102;

**Gene ID** 6900

**mRNA Refseq** NM\_005076

**Protein Refseq** NP\_005067

**MIM** 190197

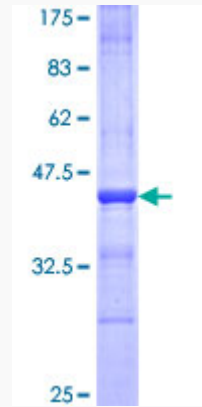
**UniProt ID** Q02246

 Tel: 1-631-559-9269 1-516-512-3133

 Email: [info@creative-biomart.com](mailto:info@creative-biomart.com)  Fax: 1-631-938-8127

 45-1 Ramsey Road, Shirley, NY 11967, USA

Quality Control  
Testing:



12.5% SDS-PAGE Stained with Coomassie Blue.

 Tel: 1-631-559-9269 1-516-512-3133

 Email: [info@creative-biomart.com](mailto:info@creative-biomart.com)  Fax: 1-631-938-8127

 45-1 Ramsey Road, Shirley, NY 11967, USA