

Active Recombinant Human CNTN3 protein(Met1-Ser1002, 708Asp/Asn), His-tagged

Cat. No. CNTN3-672H Lot. No. (See product label)

SPECIFICATION

Product Overview	Active Recombinant Human CNTN3 protein(NP_065923.1) (Met 1-Ser1002, 708 Asp/Asn) precursor was expressed in HEK293 with a C-terminal polyhistidine tag.
Species	Human
Source	HEK293
ProteinLength	1-1002 aa,708 Asp/Asn
Form	Lyophilized from sterile PBS, pH 7.4.
Bio-activity	Measured by the ability of the immobilized protein to support the adhesion of C6 Rat brain glial cells. When 5×10^4 cells/well are added to CNTN3 coated plates (0.8 $\mu\text{g/ml}$ and 100 $\mu\text{l/well}$), approximately 35%-55% will adhere specifically after 60 minutes at 37°C.
Molecular Mass	The recombinant human CNTN3 consists of 994 amino acids and has a calculated molecular mass of 109.2 kDa. By SDS-PAGE under reducing conditions, the apparent molecular mass of rh CNTN3 is approximately 120-130 kDa due to glycosylation.
Endotoxin	< 1.0 EU per μg of the protein as determined by the LAL method.
Purity	> 97 % as determined by SDS-PAGE

 Tel: 1-631-559-9269 1-516-512-3133

 Email: info@creative-biomart.com  Fax: 1-631-938-8127

 45-1 Ramsey Road, Shirley, NY 11967, USA

Storage Store it under sterile conditions at -20°C to -80°C upon receiving. Recommend to aliquot the protein into smaller quantities for optimal storage. Avoid repeated freeze-thaw cycles.

Reconstitution It is recommended that sterile water be added to the vial to prepare a stock solution of 0.2 ug/ul. Centrifuge the vial at 4°C before opening to recover the entire contents.

GENE INFORMATION

Gene Name CNTN3 contactin 3 (plasmacytoma associated) [Homo sapiens]

Official Symbol CNTN3

Synonyms CNTN3; contactin 3 (plasmacytoma associated); PANG; contactin-3; BIG 1; plasmacytoma-associated neuronal glycoprotein; brain-derived immunoglobulin superfamily protein 1; PCS; BIG-1; KIAA1496;

Gene ID 5067

mRNA Refseq NM_020872

Protein Refseq NP_065923

MIM 601325

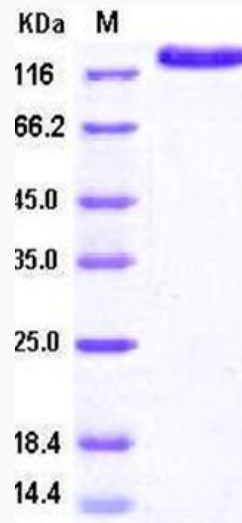
UniProt ID Q9P232

 Tel: 1-631-559-9269 1-516-512-3133

 Email: info@creative-biomart.com  Fax: 1-631-938-8127

 45-1 Ramsey Road, Shirley, NY 11967, USA

SDS-PAGE



 Tel: 1-631-559-9269 1-516-512-3133

 Email: info@creative-biomart.com  Fax: 1-631-938-8127

 45-1 Ramsey Road, Shirley, NY 11967, USA