

Active Recombinant Human CNTN3 protein(Met1-Ser1002, 708Asp/Asn), hFc-tagged

Cat. No. CNTN3-76H Lot. No. (See product label)

SPECIFICATION

Product Overview	Active Recombinant Human CNTN3 protein(NP_065923.1) (Met 1-Ser 1002, 708 Asp/Asn) was expressed in HEK293 with the fused Fc region of human IgG1 at the C-terminus.
Species	Human
Source	HEK293
ProteinLength	1-1002 aa,708 Asp/Asn
Form	Lyophilized from sterile 100mM Glycine, 10mM NaCl, 50mM Tris, pH 7.5.
Bio-activity	Measured by the ability of the immobilized protein to support the adhesion of C6 Rat brain glial cells. When 5×10^4 cells/well are added to CNTN3 coated plates (0.8 $\mu\text{g/ml}$ and 100 $\mu\text{l/well}$), approximately 30%-50% will adhere specifically after 60 minutes at 37°C.
Molecular Mass	The recombinant human CNTN3/Fc chimera consists of 1221 amino acids and has a calculated molecular mass of 134.5 kDa. In SDS-PAGE under reducing conditions, the apparent molecular mass of rhCNTN3/Fc chimera is approximately 160-170 kDa due to glycosylation.
Endotoxin	< 1.0 EU per μg of the protein as determined by the LAL method.

 Tel: 1-631-559-9269 1-516-512-3133

 Email: info@creative-biomart.com  Fax: 1-631-938-8127

 45-1 Ramsey Road, Shirley, NY 11967, USA

Purity	> 90 % as determined by SDS-PAGE
Storage	Store it under sterile conditions at -20°C to -80°C upon receiving. Recommend to aliquot the protein into smaller quantities for optimal storage. Avoid repeated freeze-thaw cycles.
Reconstitution	It is recommended that sterile water be added to the vial to prepare a stock solution of 0.2 ug/ul. Centrifuge the vial at 4°C before opening to recover the entire contents.

GENE INFORMATION

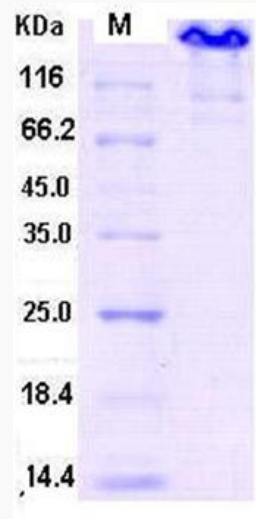
Gene Name	CNTN3 contactin 3 (plasmacytoma associated) [Homo sapiens]
Official Symbol	CNTN3
Synonyms	CNTN3; contactin 3 (plasmacytoma associated); PANG; contactin-3; BIG 1; plasmacytoma-associated neuronal glycoprotein; brain-derived immunoglobulin superfamily protein 1; PCS; BIG-1; KIAA1496;
Gene ID	5067
mRNA Refseq	NM_020872
Protein Refseq	NP_065923
MIM	601325
UniProt ID	Q9P232

 Tel: 1-631-559-9269 1-516-512-3133

 Email: info@creative-biomart.com  Fax: 1-631-938-8127

 45-1 Ramsey Road, Shirley, NY 11967, USA

SDS-PAGE



 Tel: 1-631-559-9269 1-516-512-3133

 Email: info@creative-biomart.com  Fax: 1-631-938-8127

 45-1 Ramsey Road, Shirley, NY 11967, USA