

## Active Recombinant Human CNTN5 protein, His-tagged

Cat. No. CNTN5-673H Lot. No. (See product label)

### SPECIFICATION

<b>Product Overview</b>	Active Recombinant Human CNTN5 protein(NP_055176.1) (Met 1-Gln 1059) with a C-terminal polyhistidine tag was expressed in HEK293.
<b>Species</b>	Human
<b>Source</b>	HEK293
<b>ProteinLength</b>	1-1059 aa
<b>Form</b>	Lyophilized from sterile PBS, pH 7.4.
<b>Bio-activity</b>	Measured by the ability of the immobilized protein to support the adhesion of C6 Rat brain glial cells. When 5 x 10E4 cells/well are added to CNTN5 coated plates (0.8 µg/ml and 100 µl/well), approximately 30%-50% will adhere specifically after 60 minutes at 37 °C.
<b>Molecular Mass</b>	The secreted recombinant human CNTN5 comprises 1052 amino acids with a predicted molecular mass of 116 kDa. As a result of glycosylation, rhCNTN5 migrates as an approximately 130-140 kDa band in SDS-PAGE under reducing conditions.
<b>Endotoxin</b>	< 1.0 EU per µg protein as determined by the LAL method.
<b>Purity</b>	> 95 % as determined by SDS-PAGE
<b>Storage</b>	Store it under sterile conditions at -20°C to -80°C upon receiving. Recommend to

 Tel: 1-631-559-9269 1-516-512-3133

 Email: [info@creative-biomart.com](mailto:info@creative-biomart.com)  Fax: 1-631-938-8127

 45-1 Ramsey Road, Shirley, NY 11967, USA

aliquot the protein into smaller quantities for optimal storage. Avoid repeated freeze-thaw cycles.

**Reconstitution**

It is recommended that sterile water be added to the vial to prepare a stock solution of 0.2 ug/ul. Centrifuge the vial at 4°C before opening to recover the entire contents.

**GENE INFORMATION**

**Gene Name** CNTN5 contactin 5 [ Homo sapiens ]

**Official Symbol** CNTN5

**Synonyms** CNTN5; contactin 5; contactin-5; hNB 2; NB 2; neural adhesion molecule; neural recognition molecule NB-2; NB-2; HNB-2s; MGC163491;

**Gene ID** 53942

**mRNA Refseq** NM\_001243270

**Protein Refseq** NP\_001230199

**MIM** 607219

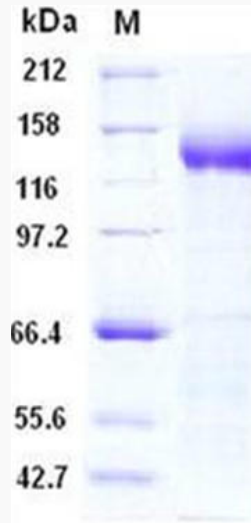
**UniProt ID** O94779

 Tel: 1-631-559-9269 1-516-512-3133

 Email: [info@creative-biomart.com](mailto:info@creative-biomart.com)  Fax: 1-631-938-8127

 45-1 Ramsey Road, Shirley, NY 11967, USA

**SDS-PAGE**



 Tel: 1-631-559-9269 1-516-512-3133

 Email: [info@creative-biomart.com](mailto:info@creative-biomart.com)  Fax: 1-631-938-8127

 45-1 Ramsey Road, Shirley, NY 11967, USA