

Recombinant Human CNTNAP5 Protein, GST-tagged

Cat. No. CNTNAP5-1613H **Lot. No.** (See product label)

SPECIFICATION

Product Overview	Human CNTNAP5 partial ORF (NP_570129, 1062 a.a. - 1160 a.a.) recombinant protein with GST-tag at N-terminal.
Species	Human
Source	Wheat Germ
Description	This gene product belongs to the neurexin family, members of which function in the vertebrate nervous system as cell adhesion molecules and receptors. This protein, like other neurexin proteins, contains epidermal growth factor repeats and laminin G domains. In addition, it includes an F5/8 type C domain, discoidin/neuropilin- and fibrinogen-like domains, and thrombospondin N-terminal-like domains. [provided by RefSeq, Jul 2008]
Molecular Mass	36.63 kDa
AA Sequence	DFVVLLCKNGSLQVRYHLNKEETHVFTIDADNFANRRMHHLKINREGRELTIQMDQ QLRLSYNFSPEVEFRVIRSLTLGKVTENLGLDSEVAKANAMG
Applications	Enzyme-linked Immunoabsorbent Assay Western Blot (Recombinant protein) Antibody Production Protein Array
Notes	Best use within three months from the date of receipt of this protein.

 Tel: 1-631-559-9269 1-516-512-3133

 Email: info@creative-biomart.com  Fax: 1-631-938-8127

 45-1 Ramsey Road, Shirley, NY 11967, USA

Storage Store at -80 centigrade. Aliquot to avoid repeated freezing and thawing.

Storage Buffer 50 mM Tris-HCl, 10 mM reduced Glutathione, pH=8.0 in the elution buffer.

GENE INFORMATION

Gene Name CNTNAP5 contactin associated protein like 5 [Homo sapiens (human)]

Official Symbol CNTNAP5

Synonyms CNTNAP5; contactin associated protein like 5; Contactin Associated Protein Like 5; Cell Recognition Molecule Caspr5; Caspr5; Contactin Associated Protein-Like 5; Contactin-Associated Protein-Like 5; caspr5; contactin-associated protein-like 5; cell recognition molecule Caspr5

Gene ID 129684

mRNA Refseq NM_130773

Protein Refseq NP_570129

MIM 610519

UniProt ID Q8WYK1

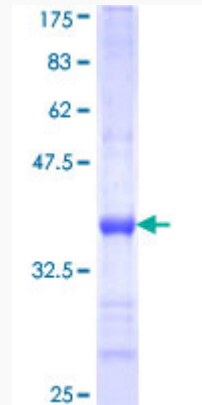
 Tel: 1-631-559-9269 1-516-512-3133

 Email: info@creative-biomart.com  Fax: 1-631-938-8127

 45-1 Ramsey Road, Shirley, NY 11967, USA

Quality Control

Testing:



12.5% SDS-PAGE Stained with Coomassie Blue.

 Tel: 1-631-559-9269 1-516-512-3133

 Email: info@creative-biomart.com  Fax: 1-631-938-8127

 45-1 Ramsey Road, Shirley, NY 11967, USA