

Recombinant Human COA1 Protein, GST-tagged

Cat. No. COA1-4224H Lot. No. (See product label)

SPECIFICATION

Product Overview	Human FLJ10803 full-length ORF (AAH56884, 1 a.a. - 146 a.a.) recombinant protein with GST-tag at N-terminal.
Species	Human
Source	Wheat Germ
Description	COA1 (Cytochrome C Oxidase Assembly Factor 1 Homolog) is a Protein Coding gene.
Molecular Mass	41.8 kDa
AA Sequence	MMWQKYAGSRRSMPLGARILFHGVFYAGGFAIVYYLIQKFHSRALYYKLAVEQLQS HPEAQEALGPPLNIHYLKLIDRENFVDIVDAKLIKIPVSGSKSKGLLYVHSSRGGPFQR WHLDEVFLELKDGQQIPVFKLSGENGDEVKKE
Applications	Enzyme-linked Immunoabsorbent Assay Western Blot (Recombinant protein) Antibody Production Protein Array
Notes	Best use within three months from the date of receipt of this protein.
Storage	Store at -80 centigrade. Aliquot to avoid repeated freezing and thawing.

 Tel: 1-631-559-9269 1-516-512-3133

 Email: info@creative-biomart.com  Fax: 1-631-938-8127

 45-1 Ramsey Road, Shirley, NY 11967, USA

Storage Buffer 50 mM Tris-HCl, 10 mM reduced Glutathione, pH=8.0 in the elution buffer.

GENE INFORMATION

Gene Name COA1 cytochrome c oxidase assembly factor 1 homolog [Homo sapiens (human)]

Official Symbol COA1

Synonyms C7ORF44; chromosome 7 open reading frame 44; uncharacterized protein C7orf44; FLJ10803; COA1; cytochrome c oxidase assembly factor 1 homolog

Gene ID 55744

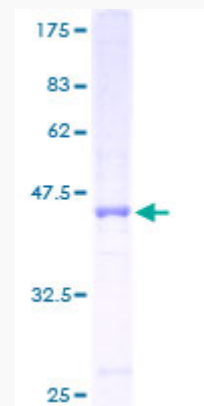
mRNA Refseq NM_018224

Protein Refseq NP_060694

MIM 614769

UniProt ID Q9GZY4

Quality Control Testing



 Tel: 1-631-559-9269 1-516-512-3133

 Email: info@creative-biomart.com  Fax: 1-631-938-8127

 45-1 Ramsey Road, Shirley, NY 11967, USA



12.5% SDS-PAGE Stained with Coomassie Blue.

 Tel: 1-631-559-9269 1-516-512-3133

 Email: info@creative-biomart.com  Fax: 1-631-938-8127

 45-1 Ramsey Road, Shirley, NY 11967, USA