

Recombinant Human COCH Protein, GST-tagged

Cat. No. COCH-1619H Lot. No. (See product label)

SPECIFICATION

Product Overview	Human COCH full-length ORF (AAH07230.1, 1 a.a. - 494 a.a.) recombinant protein with GST-tag at N-terminal.
Species	Human
Source	Wheat Germ
Description	<p>The protein encoded by this gene is highly conserved in human, mouse, and chicken, showing 94% and 79% amino acid identity of human to mouse and chicken sequences, respectively. Hybridization to this gene was detected in spindle-shaped cells located along nerve fibers between the auditory ganglion and sensory epithelium. These cells accompany neurites at the habenula perforata, the opening through which neurites extend to innervate hair cells. This and the pattern of expression of this gene in chicken inner ear paralleled the histologic findings of acidophilic deposits, consistent with mucopolysaccharide ground substance, in temporal bones from DFNA9 (autosomal dominant nonsyndromic sensorineural deafness 9) patients. Mutations that cause DFNA9 have been reported in this gene. Alternative splicing results in multiple transcript variants encoding the same protein. Additional splice variants encoding distinct isoforms have been described but their biological validities have not been demonstrated. [provided by RefSeq, Oct 2008]</p>
Molecular Mass	79.6 kDa
AA Sequence	MSAAWIPALGLGVCLLLLPGPAGSEGAAPAIITCFTRGLDIRKEKADVLCPPGGCPLEE

 Tel: 1-631-559-9269 1-516-512-3133

 Email: info@creative-biomart.com  Fax: 1-631-938-8127

 45-1 Ramsey Road, Shirley, NY 11967, USA

FSVYGNIVYASVSSICGAAVHRGVISNSGGPVRVYSLPGRENYSSVDANGIQSQMLS
 RWSASFTVTKGKSSTQEATGQAVSTAHPPTGKRLKKTPEKKTGNKDCKADIAFLIDG
 SFNIGQRRFNLQKNFVGKVALMLGIGTEGPHVGLVQASEHPKIEFYLNFTSAKDVL
 FAIKEVGFRRGNSNTGKALKHTAQKFFTVDAGVRKGIPKVVVVFIDGWPSDDIEEAGI
 VAREFGVNVFIVSVAKPIPEELGMVQDVTVDKAVCRNNGFFSYHMPNWFGTTKYV
 KPLVQKLCTHEQMMCSKTCYNSVNIAFLIDGSSSVGDSNFRLMLEFVSNIAKTFEISD
 IGAKIAAVQFTYDQRTEFSFTDYSTKENVLAVIRNIRYMSGGTATGDAISFTVRNVFG
 PIRESPNKNFLVIVTDGQSYDDVQGPAAAAHDAAK

Applications	Enzyme-linked Immunoabsorbent Assay Western Blot (Recombinant protein) Antibody Production Protein Array
Notes	Best use within three months from the date of receipt of this protein.
Storage	Store at -80 centigrade. Aliquot to avoid repeated freezing and thawing.
Storage Buffer	50 mM Tris-HCl, 10 mM reduced Glutathione, pH=8.0 in the elution buffer.

GENE INFORMATION

Gene Name	COCH coagulation factor C homolog, cochlin (Limulus polyphemus) [Homo sapiens]
Official Symbol	COCH
Synonyms	COCH; coagulation factor C homolog, cochlin (Limulus polyphemus); coagulation factor C (Limulus polyphemus homolog); cochlin , DFNA9, DFNA31; cochlin; COCH 5B2; DFNA9; COCH5B2; COCH-5B2;
Gene ID	1690

 Tel: 1-631-559-9269 1-516-512-3133

 Email: info@creative-biomart.com  Fax: 1-631-938-8127

 45-1 Ramsey Road, Shirley, NY 11967, USA

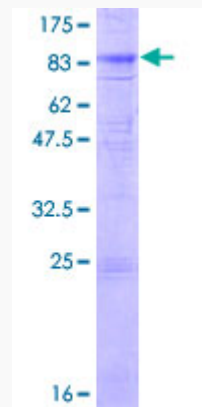
mRNA Refseq [NM_001135058](#)

Protein Refseq [NP_001128530](#)

MIM [603196](#)

UniProt ID [O43405](#)

**Quality Control
Testing:**



12.5% SDS-PAGE Stained with Coomassie Blue.

 Tel: 1-631-559-9269 1-516-512-3133

 Email: info@creative-biomart.com  Fax: 1-631-938-8127

 45-1 Ramsey Road, Shirley, NY 11967, USA