

Recombinant Rhesus monkey COL10A1 protein, His-tagged

Cat. No. COL10A1-1769R Lot. No. (See product label)

SPECIFICATION

Product Overview	Recombinant Rhesus monkey COL10A1 aa. (Thr547~Met680) fused with N-terminal His tag was produced in E. coli cells.
Species	Rhesus macaque
Source	E.coli
ProteinLength	Thr547~Met680
Form	Freeze-dried powder
Molecular Mass	16kDa as determined by SDS-PAGE reducing conditions.
Endotoxin	<1.0EU per 1ug (determined by the LAL method)
Purity	>95%
Applications	SDS-PAGE; WB; ELISA; IP; CoIP; Purification; Amine Reactive Labeling.
Stability	The thermal stability is described by the loss rate. The loss rate was determined by accelerated thermal degradation test, that is, incubate the protein at 37°C for 48h, and no obvious degradation and precipitation were observed. The loss rate is less than 5% within the expiration date under appropriate storage condition.
Storage	Avoid repeated freeze/thaw cycles. Store at 2-8°C for one month. Aliquot and store at

 Tel: 1-631-559-9269 1-516-512-3133

 Email: info@creative-biomart.com  Fax: 1-631-938-8127

 45-1 Ramsey Road, Shirley, NY 11967, USA

-80°C for 12 months.

Concentration 200µg/mL

Storage buffer 20mM Tris, 150mM NaCl, pH8.0, containing 1mM EDTA, 1mM DTT, 0.01% sarcosyl, 5%Trehalose and Proclin300.

Reconstitution Reconstitute in 20mM Tris, 150mM NaCl (pH8.0) to a concentration of 0.1-1.0 mg/mL. Do not vortex.

Isoelectric Point 6.7

GENE INFORMATION

Gene Name COL10A1 collagen type X alpha 1 chain [*Macaca mulatta* (Rhesus monkey)]

Official Symbol COL10A1

Synonyms COL10A1; collagen alpha-1(X) chain

Gene ID 716223

mRNA Refseq NM_001194546.1

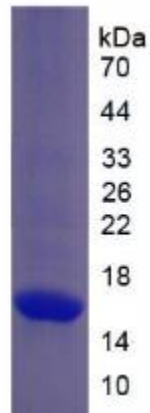
Protein Refseq NP_001181475.1

 Tel: 1-631-559-9269 1-516-512-3133

 Email: info@creative-biomart.com  Fax: 1-631-938-8127

 45-1 Ramsey Road, Shirley, NY 11967, USA

SDS-PAGE



 Tel: 1-631-559-9269 1-516-512-3133

 Email: info@creative-biomart.com  Fax: 1-631-938-8127

 45-1 Ramsey Road, Shirley, NY 11967, USA