

Recombinant Bovine COL10A1 Protein, His-tagged

Cat. No. COL10A1-348B Lot. No. (See product label)

SPECIFICATION

| | |
|-------------------------|--|
| Product Overview | Recombinant Bovine COL10A1(Ala547~Met674) fused with His tag at N-terminal was expressed in E. coli. |
| Species | Bovine |
| Source | E.coli |
| ProteinLength | Ala547~Met674 |
| Form | PBS, pH7.4, containing 0.01% SKL, 1mM DTT, 5% Trehalose and Proclin300. |
| Molecular Mass | 18.1kDa |
| Endotoxin | <1.0EU per 1ug (determined by the LAL method) |
| Purity | > 95% |
| Applications | Positive Control; Immunogen; SDS-PAGE; WB. If bio-activity of the protein is needed, please check active protein |
| Stability | The thermal stability is described by the loss rate. The loss rate was determined by accelerated thermal degradation test, that is, incubate the protein at 37 centigrade for 48h, and no obvious degradation and precipitation were observed. The loss rate is less than 5% within the expiration date under appropriate storage condition. |

 Tel: 1-631-559-9269 1-516-512-3133

 Email: info@creative-biomart.com  Fax: 1-631-938-8127

 45-1 Ramsey Road, Shirley, NY 11967, USA

Storage Avoid repeated freeze/thaw cycles. Store at 2-8 centigrade for one month. Aliquot and store at -80 centigrade for 12 months.

Reconstitution Reconstitute in PBS or others

GENE INFORMATION

Gene Name COL10A1 collagen type X alpha 1 chain [Bos taurus]

Official Symbol COL10A1

Synonyms collagen, type X, alpha 1 (Schmid metaphyseal chondrodysplasia); type X collagen alpha 1

Gene ID 282416

mRNA Refseq NM_174634

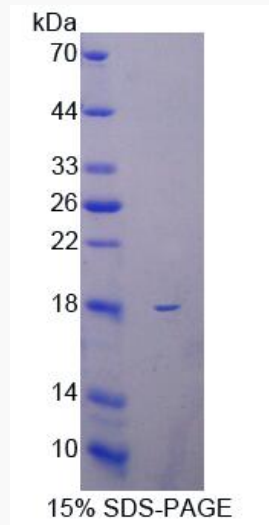
Protein Refseq NP_777059

UniProt ID P23206

 Tel: 1-631-559-9269 1-516-512-3133

 Email: info@creative-biomart.com  Fax: 1-631-938-8127

 45-1 Ramsey Road, Shirley, NY 11967, USA



Tel: 1-631-559-9269 1-516-512-3133

Email: info@creative-biomart.com Fax: 1-631-938-8127

45-1 Ramsey Road, Shirley, NY 11967, USA