

## Recombinant Human COL15A1 protein

**Cat. No.** COL15A1-1171H    **Lot. No.** (See product label)

### SPECIFICATION

<b>Product Overview</b>	Recombinant Human COL15A1 protein was expressed in Escherichia coli.
<b>Species</b>	Human
<b>Source</b>	E.coli
<b>ProteinLength</b>	177
<b>Description</b>	Endostatin has been identified as a C-terminal fragment of Collagen type 18, a recently identified member of a family of collagen-like proteins referred to as multiplexin family. Endostatin specifically inhibits proliferation of endothelial cells although it does not affect the proliferation of EOMA cells. Endostatin also potently inhibits angiogenesis and tumor growth. Endostatin has an important role in endothelial cell adhesion and cytoskeletal organization. Endostatin can be found in vessel walls (elastic fibers) and basement membranes. Recombinant Endostatin expressed in yeast causes G1 arrest of endothelial cells, and endostatin treatment results in apoptosis of HUVE and HMVE cells.
<b>Form</b>	Lyophilized from a 0.2µm filtered concentrated solution in PBS, pH 7.4.
<b>Bio-activity</b>	Fully biologically active when compared to standard. The ED50 as determined by inhibiting the FGF basic-dependent proliferation of HUVEC migration is less than 2.0 g/mL in the presence of Anti-Human Endostatin Polyclonal Antibody.
<b>Molecular Mass</b>	Approximately 19.8 kDa, a single non-glycosylated polypeptide chain containing 177

 Tel: 1-631-559-9269    1-516-512-3133

 Email: [info@creative-biomart.com](mailto:info@creative-biomart.com)     Fax: 1-631-938-8127

 45-1 Ramsey Road, Shirley, NY 11967, USA

amino acids (C-terminal fragment of collagen XVIII).

**AA Sequence**

NYEKPALHLAALNMPFSGDIRADFQCFKQARAAGLLSTYRAFLSSHLQDLSTIVRKA  
 ERYSLPIVNLKGQVLFNWNDSIFSGHGGQFNMHIPYISFDGRDIMTDPSPWPQKVIWH  
 GSSPHGVRLVDNYCEAWRTADTAVTGLASPLSTGKILDQKAYSCANRLIVLCIENSF  
 MTDARK

**Endotoxin**

Less than 1 EU/μg of rHuEndostatin as determined by LAL method.

**Purity**

>96% by SDS-PAGE and HPLC analysis.

**Storage**

Use a manual defrost freezer and avoid repeated freeze-thaw cycles. 12 months from date of receipt, -20 to -70 centigrade as supplied. 1 month, 2 to 8 centigrade under sterile conditions after reconstitution. 3 months, -20 to -70 centigrade under sterile conditions after reconstitution.

**Reconstitution**

We recommend that this vial be briefly centrifuged prior to opening to bring the contents to the bottom. Reconstitute in sterile distilled water or aqueous buffer containing 0.1 % BSA to a concentration of 0.1-1.0 mg/mL. Stock solutions should be apportioned into working aliquots and stored at ≤-20 centigrade. Further dilutions should be made in appropriate buffered solutions.

## GENE INFORMATION

**Gene Name**

COL15A1

**Official Symbol**

COL15A1

**Synonyms**

COL15A1; collagen, type XV, alpha 1; collagen alpha-1(XV) chain; collagen type XV proteoglycan; collagen XV, alpha-1 polypeptide; FLJ38566;

 Tel: 1-631-559-9269 1-516-512-3133

 Email: [info@creative-biomart.com](mailto:info@creative-biomart.com)  Fax: 1-631-938-8127

 45-1 Ramsey Road, Shirley, NY 11967, USA

**Gene ID** 1306

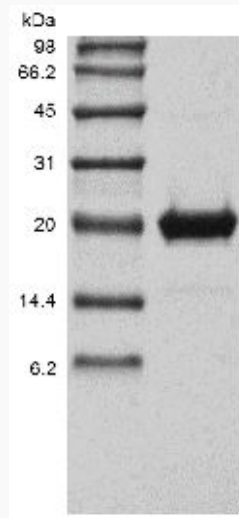
**mRNA Refseq** NM\_001855

**Protein Refseq** NP\_001846

**MIM** 120325

**UniProt ID** P39059

**SDS-PAGE of  
COL15A1-1171H**



 Tel: 1-631-559-9269 1-516-512-3133

 Email: [info@creative-biomart.com](mailto:info@creative-biomart.com)  Fax: 1-631-938-8127

 45-1 Ramsey Road, Shirley, NY 11967, USA