

Recombinant Human COL15A1 Protein, Myc/DDK-tagged, C13 and N15-labeled

Cat. No. COL15A1-2093H **Lot. No.** (See product label)

SPECIFICATION

Product Overview	COL15A1 MS Standard C13 and N15-labeled recombinant protein (NP_001846) with a C-terminal MYC/DDK tag, was expressed in HEK293 cells.
Species	Human
Source	HEK293
Description	This gene encodes the alpha chain of type XV collagen, a member of the FACIT collagen family (fibril-associated collagens with interrupted helices). Type XV collagen has a wide tissue distribution but the strongest expression is localized to basement membrane zones so it may function to adhere basement membranes to underlying connective tissue stroma. The proteolytically produced C-terminal fragment of type XV collagen is restin, a potentially antiangiogenic protein that is closely related to endostatin. Mouse studies have shown that collagen XV deficiency is associated with muscle and microvessel deterioration.
Molecular Mass	141.72 kDa
AA Sequence	MAPRRNNGQCWCLLMLLSVSTPLPAVTQTRGATETASQGHLDTQLIGVPLPSSVS FVTGYGGFPAYSFGPGANVGRPARTLIPSTFFRDF AISVVVKPSSTRGGVLFITDAF QKVIYLGRLRSGVEDGHQRIILYYTEPGSHVSQEAAAFSVPVMTHRWNRFAMIVQGE EVTLLVNCEEHSRIPFQRSSQALAFESSAGIFMGNAGATGLERFTGSLQQLTVHPDP RTPEELCDPEESSASGETSGLQEADGVAEILEAVTYTQASPKEAKVEPINTPPTPSS

 Tel: 1-631-559-9269 1-516-512-3133

 Email: info@creative-biomart.com  Fax: 1-631-938-8127

 45-1 Ramsey Road, Shirley, NY 11967, USA

PFEDMELSGEPVPEGTLETTNMSIIQHSSPKQGSGEILNDTLEGVHSVDGDPITDSG
 SGAGAFLDIAEEKNLAATAAGLAEVPISTAGEAEASSVPTGGPTLSMSTENPEEGVT
 PGPDNEERLAATAAGEAEALASMPGEVEASGVAPGELDLSMSAQLGEEATVGPS
 SEDSLTAAAAATEVSLSTFEDEEASGVPTDGLAPLTATMAPERAVTSGPGDEEDLAA
 ATTEEPLITAGGEESGSPPPDGPPLPLPTVAPERWITPAQREHVGMKGQAGPKGEK
 GDAGEELPGPPEPSGPVGTAGAEAEAGSGLGWGSDVSGSGDLVGSEQLLRGPP
 GPPGPPGLPGIPGKPGTDVFMGPPGSPGEDGPAGEPAPPGPEGQPGVDGATGLP
 GMKGEKGARGPNGSVGEKGDGPNRGLPGPPGKKGQAGPPGVMGPPGPPGPPGP
 PGPGCTMGLGFEDTEGSGSTQLLNEPKLSRPTAAIGLKGEKGDGRGPKGERGMDGA
 SIVGPPGPRGPPGHKVLNSNLINITHGFNFSDIPELVGPPGPDGLPGLPGFPGRG
 PKGDTGLPGFPGLKGEQGEKGEPGAILEDIPLERLMGKKGEPGMHGAPGPMGPK
 GPPGHKGEFGLPGRPGRPGLNGLKGTGKDPGVIMQGPPGLPGPPGPPGPPGAVIN
 IKGAIFPIVVRPHCKMPVDTAHPGSELITFHGVKGEKGSWGLPGSKGEKGDQGAQ
 GPPGPPLDLAYLRHFLNLLKGENGDKGFKGEKGEKGDINGSFLMSGPPGLPGNPG
 PAGQKGETVVGPQGGPPGAPGLPGPPGFGRPGDPGPPGPPGPPGPPAILGAAVALP
 GPPGPPGQPLPGSRNLVTAFSNMDDMLQKAHLVIEGTFIYLRDSTEFFIRVRDGW
 KKLQLGELIPIPADSPPPPALSSNPHQLLPPPNPISSANYEKPALHLAALNMPFSGDIR
 ADFQCQKQARAAGLLSTYRAFLSSHLQDLSTIVRKAERYSLPIVNLKGQVLFNNWDSI
 FSGHGGQFNMHIPIYSFDGRDIMTDPSWPQKVIWHGSSPHGVRLVDNYCEAWRTA
 DTAVTGLASPLSTGKILDQKAYSCANRLIVLCIENSFMTDARKTRTRPLEQKLISEEDL
 AANDILDYKDDDDKV

Purity > 80% as determined by SDS-PAGE and Coomassie blue staining

Stability Stable for 3 months from receipt of products under proper storage and handling conditions.

Storage Store at -80 centigrade. Avoid repeated freeze-thaw cycles.

Concentration 50 µg/mL as determined by BCA

 Tel: 1-631-559-9269 1-516-512-3133

 Email: info@creative-biomart.com  Fax: 1-631-938-8127

 45-1 Ramsey Road, Shirley, NY 11967, USA

Storage Buffer 100 mM glycine, 25 mM Tris-HCl, pH 7.3.

GENE INFORMATION

Gene Name COL15A1 collagen type XV alpha 1 chain [Homo sapiens (human)]

Official Symbol COL15A1

Synonyms COL15A1; collagen, type XV, alpha 1; collagen alpha-1(XV) chain; collagen type XV proteoglycan; collagen XV, alpha-1 polypeptide; FLJ38566;

Gene ID 1306

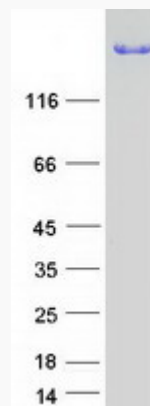
mRNA Refseq NM_001855

Protein Refseq NP_001846

MIM 120325

UniProt ID P39059

SDS-PAGE



 Tel: 1-631-559-9269 1-516-512-3133

 Email: info@creative-biomart.com  Fax: 1-631-938-8127

 45-1 Ramsey Road, Shirley, NY 11967, USA