

Recombinant Full Length Human COL15A1 Protein, C-Flag-tagged

Cat. No. COL15A1-277HFL **Lot. No.** (See product label)

SPECIFICATION

Product Overview	Recombinant Full Length Human COL15A1 Protein, fused to Flag-tag at C-terminus, was expressed in Mammalian cells.
Species	Human
Source	Mammalian Cells
Description	This gene encodes the alpha chain of type XV collagen, a member of the FACIT collagen family (fibril-associated collagens with interrupted helices). Type XV collagen has a wide tissue distribution but the strongest expression is localized to basement membrane zones so it may function to adhere basement membranes to underlying connective tissue stroma. The proteolytically produced C-terminal fragment of type XV collagen is restin, a potentially antiangiogenic protein that is closely related to endostatin. Mouse studies have shown that collagen XV deficiency is associated with muscle and microvessel deterioration.
Form	25 mM Tris HCl, pH 7.3, 100 mM glycine, 10% glycerol.
Molecular Mass	138.9 kDa
AA Sequence	MAPRRNNGQCWCLLMLLSVSTPLPAVTQTRGATETASQGHLDLTQLIGVPLPSSVS FVTGYGGFPAYSFG PGANVGRPARTLIPSTFFRDF AISVVVKPSSTRGGVLF AITDA FQKVIYLGRLSGVEDGHQRIILYYTE PGSHVSQEAAAFSVPVMTHRWNRFAMIVQ GEEVTLLVNCEEHSRIPFQRSSQALAFESSAGIFMGNAGAT GLERFTGSLQQLTVH

 Tel: 1-631-559-9269 1-516-512-3133

 Email: info@creative-biomart.com  Fax: 1-631-938-8127

 45-1 Ramsey Road, Shirley, NY 11967, USA

PDPRTPEELCDPEESSASGETSGLQEADGVAEILEAVTYTQASPKEAKVEPINTP PT
 PSSPFEDMELSGEPVPEGTLETTNMSIIQHSSPKQGSGEILNDTLEGVHSVDGDPIT
 DSGSGAGAFD IAEEKNLAATAAGLAEVPISTAGEAEASSVPTGGPTLSMSTENPEE
 GVTPGPDNEERLAATAAGEAEALA SMPGEVEASGVAPGELDLSMSAQLGEEATV
 GPSSDSLTTAAAATEVSLSTFEDEEASGVPTDGLAPLT ATMAPERAVTSGPGDEE
 DLAAATTEEPLITAGGEESGSPPPDGPPLPLPTVAPERWITPAQREHVMKGGQ AGP
 KGEKGDAGEELPGPPEPSGPVGTAGAEAEAGSGLGWGSDVGSGLDLVGSEQLL
 RGPPGPPGPPGLP GIPGKPGTDVFMGPPGSPGEDGPAGEPGPPGPEGQPGVDG
 ATGLPGMKGEKGARGPNGSVGEKGDGPNRG LPGPPGKKGQAGPPGVMGPPGPP
 GPPGPPGPGCTMGLGFEDTEGSGSTQLLNEPKLSRPTAAIGLKGEKG DRGPKGER
 GMDGASIVGPPGPRGPPGHIKVLNSNLINITHGFMNFSDIPELVGPPGPDGLPGLPG
 FPGPR GPKGDTGLPGFPGLKGEQGEKGEPGAILEDIPLERLMGKKGEPGMHGAP
 GPMGPKGPPGHKGEFGLPGR PGRPGLNGLKGTGKDPGVIMQGGPPGLPGGPPGPP
 GPPGAVINIKGAIFPIVRPHCKMPVDTAHPGSPELI TFHGVKGEKGSWGLPGSKGE
 KGDQGAQGGPPPLDLAYLRHFLNLLKGENGDGKFKGEKGEKGDINGSFL MSGPP
 GLPGNPGPAGQKGETVVGPPQGGPPGAPGLPGPPGFGRPGDPGPPGPPGPPGPPAI
 LGAAVALPGPP GPPGQPGLPGSRNLVTAFSNMDDMLQKAHLVIEGTFIYLRDSTEF
 FIRVRDGWKKLQLGELIPIPADSPP PPALSSNPQHLLPPPNPISSANYEKPALHLAAL
 NMPFSGDIRADFQCFKQARAAGLLSTYRAFLSSHLQD LSTIVRKAERYSLPIVNLKG
 QVLFNNWDSIFSGHGGQFNMHIPIYSFDGRDIMTDPSWPQKVIWHGSSPH
 GVRLVDNYCEAWRTADTAVTGLASPLSTGKILDQKAYSCANRLIVLCIENSFMTDAR
 KTRTRPLEQKLISEEDLAANDILDYKDDDDKV

Purity > 80% as determined by SDS-PAGE and Coomassie blue staining.

Stability Stable for 12 months from the date of receipt of the product under proper storage and handling conditions. Avoid repeated freeze-thaw cycles.

Storage Store at -80 centigrade.

 Tel: 1-631-559-9269 1-516-512-3133

 Email: info@creative-biomart.com  Fax: 1-631-938-8127

 45-1 Ramsey Road, Shirley, NY 11967, USA

Concentration >50 ug/mL as determined by microplate BCA method.

Preparation Recombinant protein was captured through anti-DDK affinity column followed by conventional chromatography steps.

Full Length Full L.

GENE INFORMATION

Gene Name COL15A1 collagen type XV alpha 1 chain [Homo sapiens (human)]

Official Symbol COL15A1

Synonyms FLJ38566

Gene ID 1306

mRNA Refseq NM_001855.5

Protein Refseq NP_001846.3

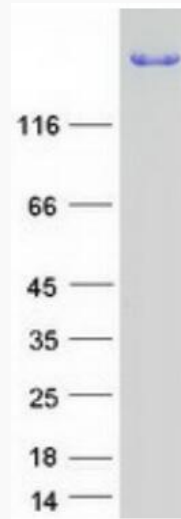
MIM 120325

UniProt ID P39059

 Tel: 1-631-559-9269 1-516-512-3133

 Email: info@creative-biomart.com  Fax: 1-631-938-8127

 45-1 Ramsey Road, Shirley, NY 11967, USA



Coomassie blue staining of purified COL15A1 protein.

 Tel: 1-631-559-9269 1-516-512-3133

 Email: info@creative-biomart.com  Fax: 1-631-938-8127

 45-1 Ramsey Road, Shirley, NY 11967, USA