

## Recombinant Human COL16A1 Protein, GST-tagged

**Cat. No.** COL16A1-1638H    **Lot. No.** (See product label)

### SPECIFICATION

<b>Product Overview</b>	Human COL16A1 partial ORF ( NP_001847, 117 a.a. - 216 a.a.) recombinant protein with GST-tag at N-terminal.
<b>Species</b>	Human
<b>Source</b>	Wheat Germ
<b>Description</b>	This gene encodes the alpha chain of type XVI collagen, a member of the FACIT collagen family (fibril-associated collagens with interrupted helices). Members of this collagen family are found in association with fibril-forming collagens such as type I and II, and serve to maintain the integrity of the extracellular matrix. High levels of type XVI collagen have been found in fibroblasts and keratinocytes, and in smooth muscle and amnion. [provided by RefSeq, Jul 2008]
<b>Molecular Mass</b>	36.74 kDa
<b>AA Sequence</b>	WYLFQVTDANGYPQISLEVNSQERSLELRAQGQDGFVSCIFPVPQLFDLRWHKLM LSVAGRVASVHVDCSSASSQPLGPRRPMRPVGHVFLGLDAEQGK
<b>Applications</b>	Enzyme-linked Immunoabsorbent Assay Western Blot (Recombinant protein) Antibody Production Protein Array
<b>Notes</b>	Best use within three months from the date of receipt of this protein.

 Tel: 1-631-559-9269    1-516-512-3133

 Email: [info@creative-biomart.com](mailto:info@creative-biomart.com)     Fax: 1-631-938-8127

 45-1 Ramsey Road, Shirley, NY 11967, USA

<b>Storage</b>	Store at -80 centigrade. Aliquot to avoid repeated freezing and thawing.
<b>Storage Buffer</b>	50 mM Tris-HCl, 10 mM reduced Glutathione, pH=8.0 in the elution buffer.
<b>GENE INFORMATION</b>	
<b>Gene Name</b>	COL16A1 collagen type XVI alpha 1 chain [ Homo sapiens (human) ]
<b>Official Symbol</b>	COL16A1
<b>Synonyms</b>	COL16A1; collagen type XVI alpha 1 chain; Collagen Type XVI Alpha 1 Chain; Collagen, Type XVI, Alpha 1; Collagen XVI, Alpha-1 Polypeptide; Collagen Alpha-1(XVI) Chain; Alpha 1 Type XVI Collagen; FP1572; 447AA; collagen alpha-1(XVI) chain; alpha 1 type XVI collagen; collagen XVI, alpha-1 polypeptide; collagen, type XVI, alpha 1
<b>Gene ID</b>	1307
<b>mRNA Refseq</b>	NM_001856
<b>Protein Refseq</b>	NP_001847
<b>MIM</b>	120326
<b>UniProt ID</b>	Q07092

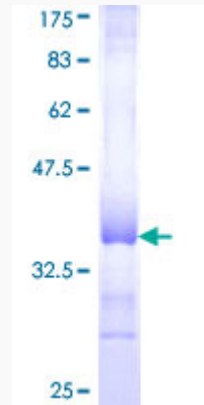
 Tel: 1-631-559-9269 1-516-512-3133

 Email: [info@creative-biomart.com](mailto:info@creative-biomart.com)  Fax: 1-631-938-8127

 45-1 Ramsey Road, Shirley, NY 11967, USA

**Quality Control**

**Testing:**



12.5% SDS-PAGE Stained with Coomassie Blue.

 Tel: 1-631-559-9269 1-516-512-3133

 Email: [info@creative-biomart.com](mailto:info@creative-biomart.com)  Fax: 1-631-938-8127

 45-1 Ramsey Road, Shirley, NY 11967, USA