

# Recombinant Human COL18A1 Protein (1578-1754 aa), His-tagged

**Cat. No.** COL18A1-1367H    **Lot. No.** (See product label)

## SPECIFICATION

<b>Product Overview</b>	Recombinant Human COL18A1 Protein (1578-1754 aa) is produced by Yeast expression system. This protein is fused with a 6xHis tag at the N-terminal. Research Area: Cell Adhesion. Protein Description: Partial.
<b>Species</b>	Human
<b>Source</b>	Yeast
<b>ProteinLength</b>	1578-1754 aa
<b>Description</b>	COLA18A probably plays a major role in determining the retinal structure as well as in the closure of the neural tube. Endostatin potently inhibits endothelial cell proliferation and angiogenesis. May inhibit angiogenesis by binding to the heparan sulfate proteoglycans involved in growth factor signaling.
<b>Form</b>	Tris-based buffer, 50% glycerol
<b>Molecular Mass</b>	21.3 kDa
<b>AA Sequence</b>	QPVLHLVALNSPLSGGMRGIRGADFQCFQQRARAVGLAGTFRAFLSSRLQDLYSIVR RADRAAVPIVNLKDELLFPSWEALFSGSEGPLKPGARIFSFQDVKDVLRHPTWPQKSV WHGSDPNRRRLTESYCETWRTEAPSATGQASSLLGGRLGQSAASCHHAYIVLCIE NSFMTASK

 Tel: 1-631-559-9269    1-516-512-3133

 Email: [info@creative-biomart.com](mailto:info@creative-biomart.com)     Fax: 1-631-938-8127

 45-1 Ramsey Road, Shirley, NY 11967, USA

<b>Purity</b>	> 90% as determined by SDS-PAGE.
<b>Notes</b>	Repeated freezing and thawing is not recommended. Store working aliquots at 4 centigrade for up to one week.
<b>Storage</b>	The shelf life is related to many factors, storage state, buffer ingredients, storage temperature and the stability of the protein itself. Generally, the shelf life of liquid form is 6 months at -20 centigrade/-80 centigrade. The shelf life of lyophilized form is 12 months at -20 centigrade/-80 centigrade.
<b>Concentration</b>	A hardcopy of COA with reconstitution instruction is sent along with the products. Please refer to it for detailed information.

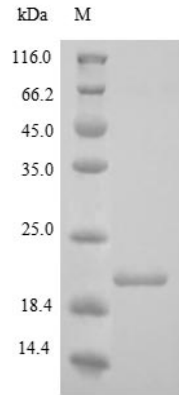
## GENE INFORMATION

<b>Gene Name</b>	COL18A1 collagen, type XVIII, alpha 1 [ Homo sapiens ]
<b>Official Symbol</b>	COL18A1
<b>Synonyms</b>	COL18A1; KNO1; KS; KNO; FLJ27325; FLJ34914; MGC74745;
<b>Gene ID</b>	80781
<b>mRNA Refseq</b>	NM_030582
<b>Protein Refseq</b>	NP_085059
<b>MIM</b>	120328
<b>UniProt ID</b>	P39060

 Tel: 1-631-559-9269 1-516-512-3133

 Email: [info@creative-biomart.com](mailto:info@creative-biomart.com)  Fax: 1-631-938-8127

 45-1 Ramsey Road, Shirley, NY 11967, USA



(Tris-Glycine gel) Discontinuous SDS-PAGE (reduced) with 5% enrichment gel and 15% separation gel.

 Tel: 1-631-559-9269 1-516-512-3133

 Email: [info@creative-biomart.com](mailto:info@creative-biomart.com)  Fax: 1-631-938-8127

 45-1 Ramsey Road, Shirley, NY 11967, USA