

Recombinant Human COL1A1 Protein, His-tagged

Cat. No. COL1A1-001H Lot. No. (See product label)

SPECIFICATION

Product Overview Purified recombinant protein of Human collagen, type I, alpha 1 (COL1A1), with N-terminal His tag, secretory expressed in HEK293 cells, 50ug

Species Human

Source HEK293

ProteinLength 300-744 aa

Description

This gene encodes the pro-alpha1 chains of type I collagen whose triple helix comprises two alpha1 chains and one alpha2 chain. Type I is a fibril-forming collagen found in most connective tissues and is abundant in bone, cornea, dermis and tendon. Mutations in this gene are associated with osteogenesis imperfecta types I-IV, Ehlers-Danlos syndrome type VIIA, Ehlers-Danlos syndrome Classical type, Caffey Disease and idiopathic osteoporosis. Reciprocal translocations between chromosomes 17 and 22, where this gene and the gene for platelet-derived growth factor beta are located, are associated with a particular type of skin tumor called dermatofibrosarcoma protuberans, resulting from unregulated expression of the growth factor. Two transcripts, resulting from the use of alternate polyadenylation signals, have been identified for this gene.

Molecular Mass 40.8 kDa

Purity >90% as determined by SDS-PAGE and Coomassie blue staining

 Tel: 1-631-559-9269 1-516-512-3133

 Email: info@creative-biomart.com  Fax: 1-631-938-8127

 45-1 Ramsey Road, Shirley, NY 11967, USA

Stability	Stable for 12 months from the date of receipt of the product under proper storage and handling conditions. Avoid repeated freeze-thaw cycles.
Storage	Store at -80 centigrade.
Concentration	>50 µg/mL as determined by microplate BCA method
Storage Buffer	PBS, pH7.4, 10% glycerol

GENE INFORMATION

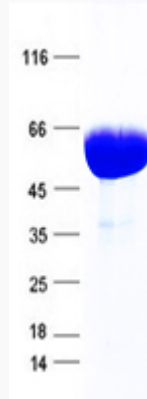
Gene Name	COL1A1 collagen type I alpha 1 chain [Homo sapiens (human)]
Official Symbol	COL1A1
Synonyms	COL1A1; collagen type I alpha 1 chain; OI1; OI2; OI3; OI4; EDSC; CAFYD; EDSARTH1; collagen alpha-1(I) chain; alpha-1 type I collagen; alpha1(I) procollagen; collagen alpha 1 chain type I; collagen alpha-1(I) chain preproprotein; collagen of skin, tendon and bone, alpha-1 chain; collagen, type I, alpha 1; pro-alpha-1 collagen type 1; type I proalpha 1; type I procollagen alpha 1 chain
Gene ID	1277
mRNA Refseq	NM_000088
Protein Refseq	NP_000079
MIM	120150
UniProt ID	P02452

 Tel: 1-631-559-9269 1-516-512-3133

 Email: info@creative-biomart.com  Fax: 1-631-938-8127

 45-1 Ramsey Road, Shirley, NY 11967, USA

SDS-PAGE



 Tel: 1-631-559-9269 1-516-512-3133

 Email: info@creative-biomart.com  Fax: 1-631-938-8127

 45-1 Ramsey Road, Shirley, NY 11967, USA