

Recombinant Human COL1A1 protein, His-tagged

Cat. No. COL1A1-01H Lot. No. (See product label)

SPECIFICATION

Product Overview	Recombinant Human COL1A1 protein, fused to His-tag, was expressed in HEK293.
Species	Human
Source	HEK293
ProteinLength	1464 aa
Description	<p>This gene encodes the pro-alpha1 chains of type I collagen whose triple helix comprises two alpha1 chains and one alpha2 chain. Type I is a fibril-forming collagen found in most connective tissues and is abundant in bone, cornea, dermis and tendon. Mutations in this gene are associated with osteogenesis imperfecta types I-IV, Ehlers-Danlos syndrome type VIIA, Ehlers-Danlos syndrome Classical type, Caffey Disease and idiopathic osteoporosis. Reciprocal translocations between chromosomes 17 and 22, where this gene and the gene for platelet-derived growth factor beta are located, are associated with a particular type of skin tumor called dermatofibrosarcoma protuberans, resulting from unregulated expression of the growth factor. Two transcripts, resulting from the use of alternate polyadenylation signals, have been identified for this gene.</p>
Form	Liquid
AA Sequence	<p>QLSYGYDEKSTGGISVPGPMGSPGPRGLPGPPGAPGPQGFQGGPPGEPGEPGASG PMGPRGPPGPPGKNGDDGEAGKPRPGERGPPGPQGARGLPGTAGLPGMKGHR GFSGLDGAKGDAGPAGPKGEPGSPGENGAPGQMGPRLPGERGRPGAPGPAGA</p>

 Tel: 1-631-559-9269 1-516-512-3133

 Email: info@creative-biomart.com  Fax: 1-631-938-8127

 45-1 Ramsey Road, Shirley, NY 11967, USA

RGNDGATGAAGPPGPTGPAGPPGFFGAVGAKGEAGPQGPRGSEGPQQGVRGEPG
 PPGPAGAAGPAGNPGADGQPGAKGANGAPGIAGAPGFPGARGPSGPQQGPGGPP
 GPKGNSGEPGAPGSKGDTGAKGEPGPVGVQGGPPGPAGEEGKRGARGEPTGL
 PGPPGERGGPGSRGFFGADGVAGPKGPAGERGSPGPAGPKGSPGEAGRPGEAG
 LPGAKGLTGSPGSPGPDGKTGPPGPAGQDGRPGPPGPPGARGQAGVMGFPGPK
 GAAGEPGKAGERGVPGPPGAVGPAGKDGEAGAQQPPGPAGPAGERGEQQPAGS
 PGFQGLPGPAGPPGEAGKPGEQQVPGDLGAPGPSGARGERGFPGERGVQGGPPG
 PAGPRGANGAPGNDGAKGDAGAPGAPGSQGAPGLQGMPPERGAAGLPGPKGDR
 GDAGPKGADGSPGKDGVRGLTGPIGPPGPAGAPGDKGESGPSGPAGPTGARGAP
 GDRGEPGPPGPAGFAGPPGADGQPGAKGEPGDAGAKGDAGPPGPAGPAGPPGPI
 GNVGAPGAKGARGGSAAGPPGATGFPGAAGRVPVGGPSGNAGPPGPPGPAGKEGG
 KGPRGETGPAGRPGEVGGPPGPPGPAGEKGSPPGADGPAGAPGTPGPQGIAGQRGV
 VGLPGQRGERGFPLPGPSGEPGKQGSPGASGERGPPGPMGPPGLAGPPGESG
 REGAPGAEGSPGRDGSPPGAKGDRGETGPAGPPGAPGAPGAPGPVGPAGKSGDR
 GETGPAGPAGVPVGPARGPAGPQQPRGDKGETGEQQDRGIKGHGRGFSLQGP
 PGPPGSPGEQQPSGASGPAGPRGPPGSAGAPGKDGLNGLPGPIGPPGPRGRTGD
 AGPVGPPGPPGPPGPPGPPSAGFDFSFLPQPPQEKAHDGGRYRAGGGGSHHHH
 HH

Purity > 95 %

Storage Store at -20 centigrade to -80 centigrade

Storage Buffer PBS, pH 6.8

GENE INFORMATION

Gene Name COL1A1 collagen type I alpha 1 chain [Homo sapiens (human)]

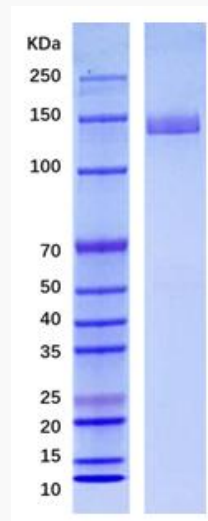
Official Symbol COL1A1

 Tel: 1-631-559-9269 1-516-512-3133

 Email: info@creative-biomart.com  Fax: 1-631-938-8127

 45-1 Ramsey Road, Shirley, NY 11967, USA

Synonyms	OI1; OI2; OI3; OI4; EDSC; CAFYD; EDSARTH1
Gene ID	1277
mRNA Refseq	NM_000088
Protein Refseq	NP_000079
MIM	120150
UniProt ID	P02452



 Tel: 1-631-559-9269 1-516-512-3133

 Email: info@creative-biomart.com  Fax: 1-631-938-8127

 45-1 Ramsey Road, Shirley, NY 11967, USA