

# Recombinant Human COL1A1 Protein (Gln23-Pro161), N-His tagged

Cat. No. COL1A1-1760H Lot. No. (See product label)

## SPECIFICATION

<b>Product Overview</b>	Recombinant human COL1A1 (Gln23-Pro161) fused with N-His tag was expressed in E. coli.
<b>Species</b>	Human
<b>Source</b>	E.coli
<b>ProteinLength</b>	Gln23-Pro161
<b>Form</b>	Lyophilized powder/frozen liquid
<b>Molecular Mass</b>	16.55 kDa
<b>Purity</b>	>90% as determined by SDS-PAGE
<b>Notes</b>	For research use only.
<b>Storage</b>	Use a manual defrost freezer and avoid repeated freeze thaw cycles. Store at 2 to 8 centigrade for one week. Store at -20 to -80 centigrade for twelve months from the date of receipt.
<b>Storage Buffer</b>	0.01M PBS, pH 7.4, 0.02% NLS
<b>Reconstitution</b>	Reconstitute in sterile water for a stock solution.

 Tel: 1-631-559-9269 1-516-512-3133

 Email: [info@creative-biomart.com](mailto:info@creative-biomart.com)  Fax: 1-631-938-8127

 45-1 Ramsey Road, Shirley, NY 11967, USA

**Shipping** They are shipped out with dry ice/blue ice unless customers require otherwise.

## GENE INFORMATION

**Gene Name** COL1A1 collagen, type I, alpha 1 [ Homo sapiens (human) ]

**Official Symbol** COL1A1

**Synonyms** COL1A1; collagen, type I, alpha 1; collagen alpha-1 (I) chain; OI4; alpha-1 type I collagen; pro-alpha-1 collagen type 1; collagen alpha 1 chain type I; collagen alpha-1 (I) chain preproprotein; collagen of skin, tendon and bone, alpha-1 chain;

**Gene ID** 1277

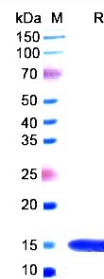
**mRNA Refseq** NM\_000088

**Protein Refseq** NP\_000079

**MIM** 120150

**UniProt ID** P02452

## SDS-PAGE



Tel: 1-631-559-9269 1-516-512-3133

Email: [info@creative-biomart.com](mailto:info@creative-biomart.com) Fax: 1-631-938-8127

45-1 Ramsey Road, Shirley, NY 11967, USA