

Recombinant Human COL1A1 protein(1021-1110 aa), C-His-tagged

Cat. No. COL1A1-2523H Lot. No. (See product label)

SPECIFICATION

Product Overview	Recombinant Human COL1A1 protein(P02452)(1021-1110 aa), fused with C-terminal His tag, was expressed in E. coli.
Species	Human
Source	E.coli
ProteinLength	1021-1110 aa
Form	0.15 M Phosphate buffered saline
Molecular Mass	10.5 kDa
Storage	Shipped on dry ice. Avoid repeated freeze-thaw cycles. Upon receipt, 2 days when stored at 2 to 8 °C after thawing. Up to 12 months when aliquoted and stored at -20 to -80°C.
Reconstitution	It is recommended that sterile water be added to the vial to prepare a stock solution of 0.2 ug/ul. Centrifuge the vial at 4°C before opening to recover the entire contents.
AA Sequence	EGSPGRDGSPPGAKGDRGETGPAGPPGAPGAPGAPGVPVGPAGKSGDRGETGPAG PAGVPVGPVARGPAGPQGPRGDKGETGEQGDRIKGH

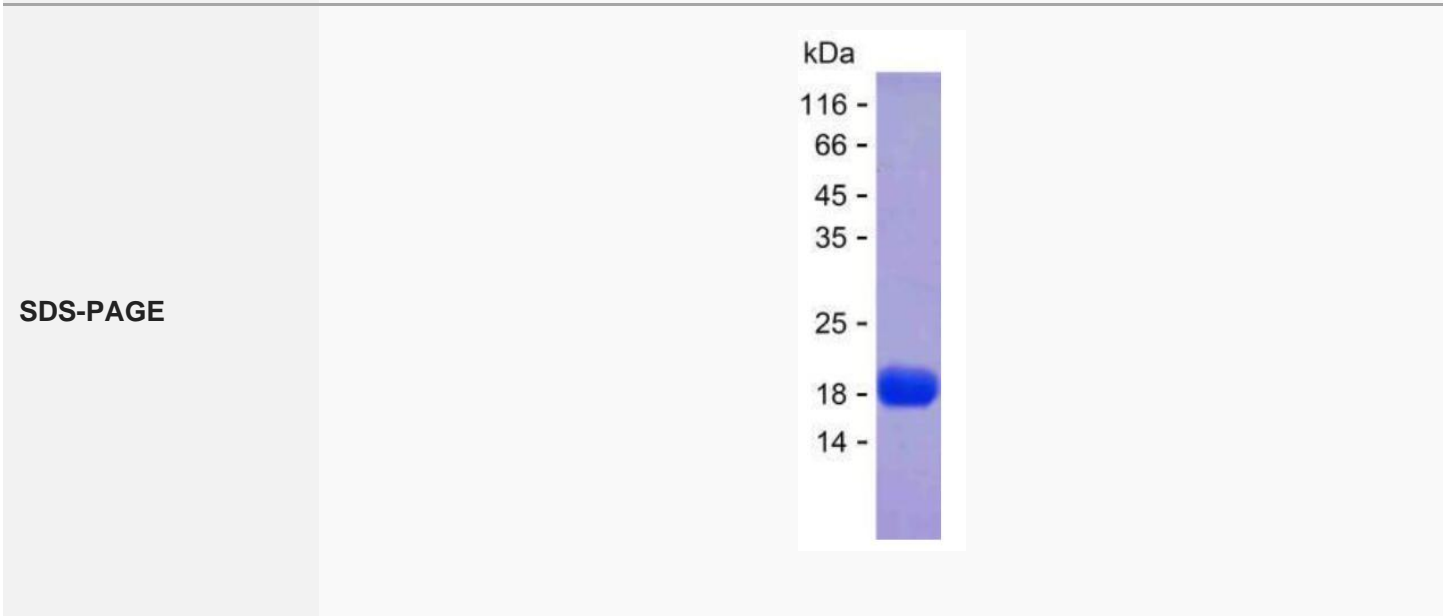
GENE INFORMATION

 Tel: 1-631-559-9269 1-516-512-3133

 Email: info@creative-biomart.com  Fax: 1-631-938-8127

 45-1 Ramsey Road, Shirley, NY 11967, USA

Gene Name	COL1A1 collagen, type I, alpha 1 [Homo sapiens]
Official Symbol	COL1A1
Synonyms	COL1A1; collagen, type I, alpha 1; collagen alpha-1(I) chain; OI4; alpha-1 type I collagen; pro-alpha-1 collagen type 1; collagen alpha 1 chain type I; collagen alpha-1(I) chain preproprotein; collagen of skin, tendon and bone, alpha-1 chain;
Gene ID	1277
mRNA Refseq	NM_000088
Protein Refseq	NP_000079
UniProt ID	P02452



Tel: 1-631-559-9269 1-516-512-3133

Email: info@creative-biomart.com Fax: 1-631-938-8127

45-1 Ramsey Road, Shirley, NY 11967, USA