

## Recombinant Human COL1A2 protein, His-tagged

Cat. No. COL1A2-01H Lot. No. (See product label)

### SPECIFICATION

|                         |   |
|-------------------------|---|
| <b>Product Overview</b> | Recombinant Human COL1A2 protein, fused to His-tag, was expressed in HEK293.  |
| <b>Species</b>          | Human   |
| <b>Source</b>           | HEK293  |
| <b>ProteinLength</b>    | 1366 aa   |
| <b>Description</b>      | <p>This gene encodes the pro-alpha2 chain of type I collagen whose triple helix comprises two alpha1 chains and one alpha2 chain. Type I is a fibril-forming collagen found in most connective tissues and is abundant in bone, cornea, dermis and tendon. Mutations in this gene are associated with osteogenesis imperfecta types I-IV, Ehlers-Danlos syndrome type VII B, recessive Ehlers-Danlos syndrome Classical type, idiopathic osteoporosis, and atypical Marfan syndrome. Symptoms associated with mutations in this gene, however, tend to be less severe than mutations in the gene for the alpha1 chain of type I collagen (COL1A1) reflecting the different role of alpha2 chains in matrix integrity. Three transcripts, resulting from the use of alternate polyadenylation signals, have been identified for this gene.</p> |
| <b>Form</b>             | Liquid  |
| <b>AA Sequence</b>      | <p>QYDGKGVGLGPGPMGLMGPRGPPGAAGAPGPQGFQGPAGEPGEPGQTGPAGAR<br/>           GPAGPPGKAGEDGHPGKPRPGERGVVGPQGARGFPGTPGLPGFKGIRGHNGLD<br/>           GLKGQPGAPGVKGEPEGAPGENGTPGQTGARGLPGERGRVGPAGARGSDGS<br/>           VGPVGPAGPIGSAGPPGFPGAPGPKGEIGAVGNAGPAGPAGPRGEVGLPGLSGPV</p>   |

 Tel: 1-631-559-9269 1-516-512-3133

 Email: [info@creative-biomart.com](mailto:info@creative-biomart.com)  Fax: 1-631-938-8127

 45-1 Ramsey Road, Shirley, NY 11967, USA

GPPGNPGANGLTGAKGAAGLPGVAGAPGLPGPRGIPGPVGAAGATGARGLVGEP  
 GPAGSKGESGNKGEPGSAGPQGGPPGSGEEGKRGNNGEAGSAGPPGPPGLRGS  
 PGSRGLPGADGRAGVMGPPGSRGASGPAGVRGPNGDAGRPGEPGLMGPRGLPG  
 SPGNIGPAGKEGPVGLPGIDGRPGPIGPAGARGEPPNIGFPGPKGPTGDPGKNGDK  
 GHAGLAGARGAPGPDGNGAQQPPGPQGVQGGKGEQPPGPPGFQQLPGPSGP  
 AGEVKGKPERGLHGEFGLPGPAGPRGERGPPGESGAAGPTGPIGSRGSPGPPGP  
 DGNKGEPGVVGAVGTAGPSGPSGLPGERGAAGIPGGKGEKGEPLRGEIGNPGR  
 DGARGAPGAVGAPGPAGATGDRGEAGAAGPAGPAGPRGSPGERGEVGPAGPNG  
 FAGPAGAAGQPGAKGERGAKGPKGENGVVGPTGPVGAAGPAGPNGPPGPAGSR  
 GDGGPPGMTGFPGAAGRTGPPGPSGISGPPGPPGPAGKEGLRGRGDQGPVGR  
 GEVAVGPPGFAGEKGPSGEAGTAGPPGTPGPQQLLAPGILGLPGSRGERGLPG  
 VAVAVGEPGLGIAGPPGARGPPGAVGSPGVNGAPGEAGRDNPNPNDGPPGRDG  
 QPGHKGERGYPGNIGPVGAAGAPGPHGPVGPAGKHGHRGETGPSGPVGPAGAV  
 GPRGPSGPQGIRGDKGEPGEKGRGLPGLKGHNGLQGLPGIAGHHGDQGAPGSV  
 GPAGPRGPAGPSGPAGKDGRTGHPGTVPAGIRGPQGHQGPAGPPGPPGPPGP  
 PGVSGGGYDFGYDGDYRAGGGGSHHHHHH\*

**Purity** > 90 %

**Storage** Store at -20 centigrade to -80 centigrade

**Storage Buffer** PBS, pH 6.8

## GENE INFORMATION

**Gene Name** COL1A2 collagen type I alpha 2 chain [ Homo sapiens (human) ]

**Official Symbol** COL1A2

**Synonyms** OI4; EDSCV; EDSARTH2

 Tel: 1-631-559-9269 1-516-512-3133

 Email: [info@creative-biomart.com](mailto:info@creative-biomart.com)  Fax: 1-631-938-8127

 45-1 Ramsey Road, Shirley, NY 11967, USA

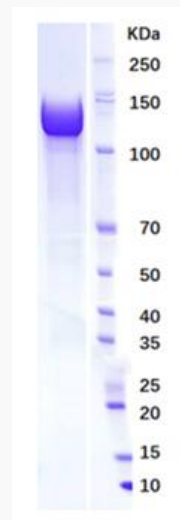
**Gene ID** 1278

**mRNA Refseq** NM\_000089

**Protein Refseq** NP\_000080

**MIM** 120160

**UniProt ID** P08123



 Tel: 1-631-559-9269 1-516-512-3133

 Email: [info@creative-biomart.com](mailto:info@creative-biomart.com)  Fax: 1-631-938-8127

 45-1 Ramsey Road, Shirley, NY 11967, USA