

Recombinant Full Length Human COL21A1 Protein, C-Flag-tagged

Cat. No. COL21A1-1527HFL **Lot. No.** (See product label)

SPECIFICATION

Product Overview	Recombinant Full Length Human COL21A1 Protein, fused to Flag-tag at C-terminus, was expressed in Mammalian cells.
Species	Human
Source	Mammalian Cells
Description	This gene encodes the alpha chain of type XXI collagen, a member of the FACIT (fibril-associated collagens with interrupted helices) collagen family. Type XXI collagen is localized to tissues containing type I collagen and maintains the integrity of the extracellular matrix. Alternative splicing results in multiple transcript variants.
Form	25 mM Tris HCl, pH 7.3, 100 mM glycine, 10% glycerol.
Molecular Mass	96.8 kDa
AA Sequence	<p>MAHYITFLCMVLVLLLQNSVLAEDGEVRSSCRTAPTDLVFILDGSYSVGPENFEIVKK WLVNITKNFDIG PKFIQVGVVQYSDYPVLEIPLGSYDSGEHLTAAVESILYLGGNTKT GKAIQFALDYLFKSSRFLTKIAV VLTDGKSQDDVKDAAQAARDSKITLFAIGVGSET EDAELRAIANKPSSTYVFYVEDYIAISKIREVMKQK LCEESVCPTRIPVAARDERGFDI LLGLDVNKKVKKRIQLSPKKIKGYEVTSKVDLSELTSNVFPEGLPPS YV FVSTQRFKV KKIWDLWRILTIDGRPQIAVTLNGVDKILLFTTTSVINGSQVVTFANPQVKTLFDEGWH QIRLLVTEQDVTLYIDDQQIENKPLHPVLGILINGQTQIGKYSGKEETVQFDVQKLR IY CDPEQNNRETA CEIPGFNGECLNGPSDVGSTPAPCICPPGKPGQLQGPKGDPGLPG</p>

 Tel: 1-631-559-9269 1-516-512-3133

 Email: info@creative-biomart.com  Fax: 1-631-938-8127

 45-1 Ramsey Road, Shirley, NY 11967, USA

NPGYPGQPQDQDGKPGYQGIAGTPGVP GSPGIQGARGLPGYKGEPGRDGDGKDR
 GLPGFPLHGMPGSKGEMGAKGDKGSPGFYGGKAKGEKGNAG FPGLPGPAGE
 PGRHGKDGLMGSPGFKGEAGSPGAPGQDTRGEPGIPGFPGNRGLMGQKGEIGP
 PGQQGK KGAPGMPGLMGSNGSPGQPGTPGSKGSKGEPGIQGMPGASGLKGEPG
 ATGSPGEPGYMGLPGIQGKKGDK GNQGEKGIQGQKGENGRQGIPGQQGIQGHG
 AKGERGEKGEPPVGAIGSKGESVDGLMGPAGPKGQPG DPGPQQPPGLDGKP
 GREFSEQFIRQVCTDVIRAQLPVLLQSGRIRNCDHCLSQHGSPGIPGPPGPIGPEG P
 RGLPGLPGRDGVPLVGVPRPGVRGLKGLPGRNGEKGSQGFYGPGEQGGPPGPP
 GPEGPPGISKEGPPG
 DPGLPGKGDHKGKPGIQGQPGPPGICDPSLCFSVIARRDPFRKGPNYTRTRPLEQK
 LISEEDLAANDILDYKDDDDKV

Purity > 80% as determined by SDS-PAGE and Coomassie blue staining.

Stability Stable for 12 months from the date of receipt of the product under proper storage and handling conditions. Avoid repeated freeze-thaw cycles.

Storage Store at -80 centigrade.

Concentration >50 ug/mL as determined by microplate BCA method.

Preparation Recombinant protein was captured through anti-DDK affinity column followed by conventional chromatography steps.

Full Length Full L.

GENE INFORMATION

Gene Name COL21A1 collagen type XXI alpha 1 chain [Homo sapiens (human)]

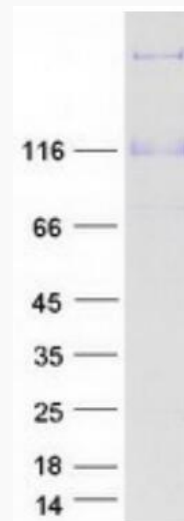
Official Symbol COL21A1

 Tel: 1-631-559-9269 1-516-512-3133

 Email: info@creative-biomart.com  Fax: 1-631-938-8127

 45-1 Ramsey Road, Shirley, NY 11967, USA

Synonyms	FP633; COLA1L
Gene ID	81578
mRNA Refseq	NM_030820.4
Protein Refseq	NP_110447.2
MIM	610002
UniProt ID	Q96P44



Coomassie blue staining of purified COL21A1 protein.

 Tel: 1-631-559-9269 1-516-512-3133

 Email: info@creative-biomart.com  Fax: 1-631-938-8127

 45-1 Ramsey Road, Shirley, NY 11967, USA