

Recombinant Human COL21A1 Protein, GST-tagged

Cat. No. COL21A1-1640H Lot. No. (See product label)

SPECIFICATION

Product Overview	Human COL21A1 partial ORF (NP_110447, 221 a.a. - 320 a.a.) recombinant protein with GST-tag at N-terminal.
Species	Human
Source	Wheat Germ
Description	This gene encodes the alpha chain of type XXI collagen, a member of the FACIT (fibril-associated collagens with interrupted helices) collagen family. Type XXI collagen is localized to tissues containing type I collagen and maintains the integrity of the extracellular matrix. Alternative splicing results in multiple transcript variants. [provided by RefSeq, Jan 2016]
Molecular Mass	36.74 kDa
AA Sequence	IPVAARDERGF DILLGLDVNKKVKKRIQLSPKKIKGYEVT SKVDLSELT SNVFPEGLPP SYV FVSTQRFKVKKI WDLWRILTIDGRPQIAVTLNGVDKIL
Applications	Enzyme-linked Immunoabsorbent Assay Western Blot (Recombinant protein) Antibody Production Protein Array
Notes	Best use within three months from the date of receipt of this protein.

 Tel: 1-631-559-9269 1-516-512-3133

 Email: info@creative-biomart.com  Fax: 1-631-938-8127

 45-1 Ramsey Road, Shirley, NY 11967, USA

Storage Store at -80 centigrade. Aliquot to avoid repeated freezing and thawing.

Storage Buffer 50 mM Tris-HCl, 10 mM reduced Glutathione, pH=8.0 in the elution buffer.

GENE INFORMATION

Gene Name COL21A1 collagen, type XXI, alpha 1 [Homo sapiens]

Official Symbol COL21A1

Synonyms COL21A1; collagen, type XXI, alpha 1; collagen alpha-1(XXI) chain; alpha 1 type XXI collagen; alpha 1 chain-like collagen; FP633; COLA1L; dJ708F5.1; dJ682J15.1; FLJ39125; FLJ44623; MGC26619; DKFZp564B052;

Gene ID 81578

mRNA Refseq NM_030820

Protein Refseq NP_110447

MIM 610002

UniProt ID Q96P44

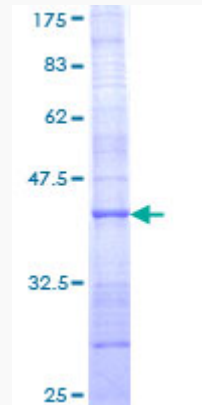
 Tel: 1-631-559-9269 1-516-512-3133

 Email: info@creative-biomart.com  Fax: 1-631-938-8127

 45-1 Ramsey Road, Shirley, NY 11967, USA

Quality Control

Testing:



12.5% SDS-PAGE Stained with Coomassie Blue.

 Tel: 1-631-559-9269 1-516-512-3133

 Email: info@creative-biomart.com  Fax: 1-631-938-8127

 45-1 Ramsey Road, Shirley, NY 11967, USA