

Recombinant Human COL21A1 Protein, Myc/DDK-tagged, C13 and N15-labeled

Cat. No. COL21A1-3498H **Lot. No.** (See product label)

SPECIFICATION

Product Overview	COL21A1 MS Standard C13 and N15-labeled recombinant protein (NP_110447) with a C-terminal MYC/DDK tag, was expressed in HEK293 cells.
Species	Human
Source	HEK293
Description	This gene encodes the alpha chain of type XXI collagen, a member of the FACIT (fibril-associated collagens with interrupted helices) collagen family. Type XXI collagen is localized to tissues containing type I collagen and maintains the integrity of the extracellular matrix. Alternative splicing results in multiple transcript variants.
Molecular Mass	99.4 kDa
AA Sequence	<p>MAHYITFLCMVLVLLLQNSVLAEDGEVRSSCRTAPTDLVFILDGSSVSGPENFEIVKK WLVNITKNFDIGPKFIQVGVVQYSDYPVLEIPLGSYDSGEHLTAAVESILYLGNTKT GKAIQFALDYLFKSSRFLTKIAVVLTDGKSQDDVKDAAQAARDSKITLFAIGVGSETE DAELRAIANKPSSTYVFYVEDYIAISKIREVMKQKLCEESVCPTRIPVAARDERGFIL LGLDVNKKVKKRIQLSPKKIKGYEVTSKVDLSELTSNVFPEGLPPSYVVFVSTQRFKVK KIWDLWRILTIDGRPQIAVTLNGVDKILLFTTTSVINGSQVVTFANPQVKTLFDEGWH QIRLLVTEQDVTLYIDDQQIENKPLHPVLGILINGQTQIGKYSGKEETVQFDVQKLRIY CDPEQNNRETACEIPGFNGECLNGPSDVGSTPAPCICPPGKPGGLQGPKGDPGLPG NPGYPGQPGQDGKPGYQGIAGTPGVPGSPGIQGARGLPGYKGEPGRDGDKGDRG</p>

 Tel: 1-631-559-9269 1-516-512-3133

 Email: info@creative-biomart.com  Fax: 1-631-938-8127

 45-1 Ramsey Road, Shirley, NY 11967, USA

LPGFPGLHGMPGSKGEMGAKGDKGSPGFYGKKGAKGEKGNAGFPGLPGPAGEPG
 RHGKDGLMGSPGFKGEAGSPGAPGQDGTREGEPGIPGFPGNRGLMGQKGEIGPPP
 QQGKKGAPGMPGLMGSNGSPGQPGTPGSKGSKGEPGIQGMPGASGLKGEPGAT
 GSPGEPGYMGLPGIQGKKGDKGNQGEKGIQGGQKGENGRQGIPGQQGIQGHGAK
 GERGEKGEPEGVRGAIGSKGESGVDGLMGPAGPKGQPGDGPQGPGLDGKPGR
 EFSEQFIRQVCTDVIRAQLPVLLQSGRIRNCDHCLSQHGSPIGPPGPIGPEGPRG
 LPGLPGRDGVPLVGVPRPGVRGLKGLPGRNGEKGSQGFYGPGEQGPPIGPPGP
 EGPPGISKEGPPGDPGLPGKGDHKGKGIQGGQPGPPGICDPSLCFSVIARRDPFRK
 GPNYTRTRPLEQKLISEEDLAANDILDYKDDDDKV

Purity > 80% as determined by SDS-PAGE and Coomassie blue staining

Stability Stable for 3 months from receipt of products under proper storage and handling conditions.

Storage Store at -80 centigrade. Avoid repeated freeze-thaw cycles.

Concentration 50 µg/mL as determined by BCA

Storage Buffer 100 mM glycine, 25 mM Tris-HCl, pH 7.3.

GENE INFORMATION

Gene Name COL21A1 collagen type XXI alpha 1 chain [Homo sapiens (human)]

Official Symbol COL21A1

Synonyms COL21A1; collagen, type XXI, alpha 1; collagen alpha-1(XXI) chain; alpha 1 type XXI collagen; alpha 1 chain-like collagen; FP633; COLA1L; dJ708F5.1; dJ682J15.1; FLJ39125; FLJ44623; MGC26619; DKFZp564B052;

 Tel: 1-631-559-9269 1-516-512-3133

 Email: info@creative-biomart.com  Fax: 1-631-938-8127

 45-1 Ramsey Road, Shirley, NY 11967, USA

Gene ID 81578

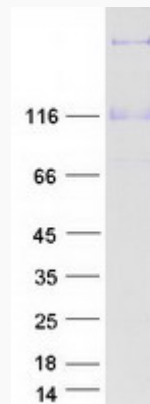
mRNA Refseq NM_030820

Protein Refseq NP_110447

MIM 610002

UniProt ID Q96P44

SDS-PAGE



 Tel: 1-631-559-9269 1-516-512-3133

 Email: info@creative-biomart.com  Fax: 1-631-938-8127

 45-1 Ramsey Road, Shirley, NY 11967, USA