

Recombinant Human COL21A1 protein, His-tagged

Cat. No. COL21A1-72H Lot. No. (See product label)

SPECIFICATION

Product Overview	Recombinant Human COL21A1 protein(Q96P44)(Glu23-Tyr957), fused with C-terminal His tag, was expressed in HEK293.
Species	Human
Source	HEK293
ProteinLength	1-957 a.a.
Tag	C-His
Form	Lyophilized from a 0.2 µm filtered solution of PBS, pH 7.4.
Molecular Mass	97.9 KDa
Endotoxin	< 1 EU/µg as determined by LAL test.
Purity	Greater than 95% as determined by reducing SDS-PAGE.
Storage	Lyophilized protein should be stored at ≤ -20°C, stable for one year after receipt. Reconstituted protein solution can be stored at 2-8°C for 2-7 days. Aliquots of reconstituted samples are stable at ≤ -20°C for 3 months.
Reconstitution	Always centrifuge tubes before opening. Do not mix by vortex or pipetting. It is not recommended to reconstitute to a concentration less than 100µg/ml. Dissolve the

 Tel: 1-631-559-9269 1-516-512-3133

 Email: info@creative-biomart.com  Fax: 1-631-938-8127

 45-1 Ramsey Road, Shirley, NY 11967, USA

lyophilized protein in distilled water. Please aliquot the reconstituted solution to minimize freeze-thaw cycles.

AA Sequence

EDGEVRSSCRTAPTDLVFILDGSYS VGPENFEIVKKWLVNITKNFDIGPK
FIQVGVVQYSYDYPVL EIPLGSYDSGEHLTAAVESILYLGG
NTKTGKAIQFALDYLFKSSRFLTK IAVVLTGKQSDDVK
DAAQAARDSKITLFAIGVGSETEDA ELRAIANKPSSTYVFYVEDYIAISK
IREVMKQKLCEESVC PTRIPVAARDERGFILLGLDVNKK
VKKRIQLSPKKIKGYEVTSKVDLSE LTSNVFPEGLPPSYV
FVSTQRFKVKKIWDLWRILTIDGRP QIAVTLNGVDKILLFTTTSVINGSQ
VVTFANPQVKTLFDE GWHQIRLLVTEQDVTLYIDDQKIEN
KPLHPVLGILINGQTQIGKYSKKEE TVQFDVQKLRIYCDP
EQNNRETACEIPGFNGECLNGPSDV GSTPAPCICPPGKPGGLQGPKGDPGL
PGNPGYPGQPGQDGK PGYQGIAGTPGVPGSPGIQGARGLP
GYKGEPGRDGDKGDRGLPGFPGLHG MPGSKGEMGAKGDKG
SPGFYGGKGAKEKGNAGFPGLPGP AGEPRRHGKDGLMGSPGFKEAGSP
GAPGQDGRGEPGIP GFPGNRGLMGQKGEIGPPGQQGKKG
APGMPGLMGSNGSPGQPGTPGSKGS KGEPGIQGMPGASGL
KGEPGATGSPGEPGYMGLPGIQGKK GDKGNQGEKGIQGGQKGENGRQGIPG
QQGIQGHGAKGERG EKGEPPVPGAIGSKGESGVDGLMGP
AGPKGQPGDPGPQPPGLDGKPGRE FSEQFIRQVCTDVIR
AQLPVLLQSGRIRNCDHCLSQHGS GIPGPPGPIGPEGPRGLPGLPGRDG
VPGLVGVPRPGVVRG LKGLPGRNGEKGSQGFYYPGEQGP
GPPGPEGPPGISKEGPPGDPGLPGK DGDHGKPGIQGQPGP
PGICDPSLCFSVIARRDPFRKGPNY VDHHHHHH

GENE INFORMATION

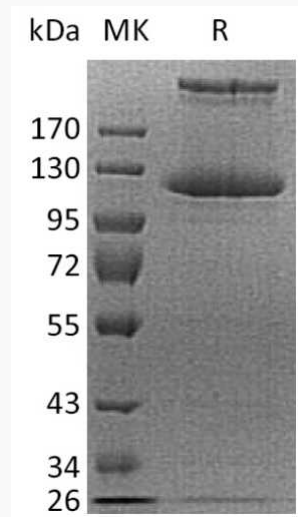
Gene Name COL21A1 collagen, type XXI, alpha 1 [Homo sapiens]

 Tel: 1-631-559-9269 1-516-512-3133

 Email: info@creative-biomart.com  Fax: 1-631-938-8127

 45-1 Ramsey Road, Shirley, NY 11967, USA

Official Symbol	COL21A1
Synonyms	COL21A1; collagen, type XXI, alpha 1; collagen alpha-1(XXI) chain; alpha 1 type XXI collagen; alpha 1 chain-like collagen; FP633; COLA1L; dJ708F5.1; dJ682J15.1; FLJ39125; FLJ44623; MGC26619; DKFZp564B052;
Gene ID	81578
mRNA Refseq	NM_030820
Protein Refseq	NP_110447
MIM	610002
UniProt ID	Q96P44

SDS-PAGE


 Tel: 1-631-559-9269 1-516-512-3133

 Email: info@creative-biomart.com  Fax: 1-631-938-8127

 45-1 Ramsey Road, Shirley, NY 11967, USA