

Recombinant Human COL23A1 Protein, GST-tagged

Cat. No. COL23A1-1641H **Lot. No.** (See product label)

SPECIFICATION

| | |
|-------------------------|--|
| Product Overview | Human COL23A1 full-length ORF (AAH42428.1, 1 a.a. - 309 a.a.) recombinant protein with GST-tag at N-terminal. |
| Species | Human |
| Source | Wheat Germ |
| Description | COL23A1 is a member of the transmembrane collagens, a subfamily of the nonfibrillar collagens that contain a single pass hydrophobic transmembrane domain (Banyard et al., 2003 [PubMed 12644459]).[supplied by OMIM, Mar 2008] |
| Molecular Mass | 57.1 kDa |
| AA Sequence | MESRSGIQAGVRCRDLGSLQPPPLALKQFSSLSLPSSWDYRRLPPRCGFLFEVSET TNPPAGTNSRHTLTVKLDGLAKIRTAREAPSECVCPPGPPGRRGKPGRRGDPGPP GPLGLDGKPLPGPKGEKGAPGDFGPRGDQGGDGAAGPPGPPGPPGARGPPGD TGKDGPRGAQGPAGPKGEPGQDGEMGPKGPPGPKGEPGVPGKKGDDGTPSQPG PPGPKGEPGSMGPRGENGVGAPGPKGEPGHRGTDGAAGPRGDVRDPGLGSVS SCSQRLASSSKKNGSEPPPGCAGCPRPQGRAGRHS GDRL |
| Applications | Enzyme-linked Immunoabsorbent Assay Western Blot (Recombinant protein) Antibody Production Protein Array |

 Tel: 1-631-559-9269 1-516-512-3133

 Email: info@creative-biomart.com  Fax: 1-631-938-8127

 45-1 Ramsey Road, Shirley, NY 11967, USA

| | |
|-----------------------|--|
| Notes | Best use within three months from the date of receipt of this protein. |
| Storage | Store at -80 centigrade. Aliquot to avoid repeated freezing and thawing. |
| Storage Buffer | 50 mM Tris-HCl, 10 mM reduced Glutathione, pH=8.0 in the elution buffer. |

GENE INFORMATION

| | |
|------------------------|---|
| Gene Name | COL23A1 collagen, type XXIII, alpha 1 [Homo sapiens] |
| Official Symbol | COL23A1 |
| Synonyms | COL23A1; collagen, type XXIII, alpha 1; collagen alpha-1(XXIII) chain; DKFZp434K0621; procollagen, type XXIII, alpha 1; |
| Gene ID | 91522 |
| mRNA Refseq | NM_173465 |
| Protein Refseq | NP_775736 |
| MIM | 610043 |
| UniProt ID | Q86Y22 |

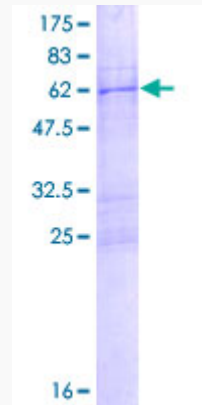
 Tel: 1-631-559-9269 1-516-512-3133

 Email: info@creative-biomart.com  Fax: 1-631-938-8127

 45-1 Ramsey Road, Shirley, NY 11967, USA

Quality Control

Testing:



12.5% SDS-PAGE Stained with Coomassie Blue.

 Tel: 1-631-559-9269 1-516-512-3133

 Email: info@creative-biomart.com  Fax: 1-631-938-8127

 45-1 Ramsey Road, Shirley, NY 11967, USA