

# Recombinant Human COL23A1 Protein, Myc/DDK-tagged, C13 and N15-labeled

**Cat. No.** COL23A1-3786H    **Lot. No.** (See product label)

## SPECIFICATION

<b>Product Overview</b>	COL23A1 MS Standard C13 and N15-labeled recombinant protein (NP_775736) with a C-terminal MYC/DDK tag, was expressed in HEK293 cells.
<b>Species</b>	Human
<b>Source</b>	HEK293
<b>Description</b>	COL23A1 is a member of the transmembrane collagens, a subfamily of the nonfibrillar collagens that contain a single pass hydrophobic transmembrane domain.
<b>Molecular Mass</b>	51.8 kDa
<b>AA Sequence</b>	<p>MGPGERAGGGGDAGKGNAAAGGGGGGRSATTAGSRAVSALCLLLSVGSAAACLLL            GVQAAALQGRVAALEEERELLRRAGPPGALDAWAEPHLERLLREKLDGLAKIRTAR            EAPSECVCPPGPPGRRGKPGRRGDPGPPGQSGRDGYPGPLGLDGKPLPGPKGE            KGAPGDFGPRGDQGDGAAGPPGPPGPPGARGPPGDTGKDGPRAQQGPAGPKG            EPGQDGEMGPKGPPGPKGEPGVPGKKGDDGTPSQPGPPGPKGEPGSMGPRGEN            GVDGAPGPKGEPGHRGTDGAAGPRGAPGLKGEQGDTVVIDYDGRILDALKGPPGP            QGPPGPPGIPGAKGELGLPGAPGIDGKGPKGQKGDGPGEPPAGLKGEAGEMGLS            GLPGADGLKGEKGESASDSLQESLAQLIVEPGPPGPPGPPGPMGLQGIQGPGLD            GAKGEKGASGERGPSGLPGVPVPPGLIGLPGTKGEKGRPGEPGLDGFPGPRGEK            GDRSERGEKGERGVPRKGVKGQKGEPPGLDQPCVPVGPDPGLPVPGCWHKTR            TRPLEQKLISEEDLAANDILDYKDDDDKV</p>

 Tel: 1-631-559-9269    1-516-512-3133

 Email: [info@creative-biomart.com](mailto:info@creative-biomart.com)     Fax: 1-631-938-8127

 45-1 Ramsey Road, Shirley, NY 11967, USA



<b>Purity</b>	> 80% as determined by SDS-PAGE and Coomassie blue staining
<b>Stability</b>	Stable for 3 months from receipt of products under proper storage and handling conditions.
<b>Storage</b>	Store at -80 centigrade. Avoid repeated freeze-thaw cycles.
<b>Concentration</b>	50 µg/mL as determined by BCA
<b>Storage Buffer</b>	100 mM glycine, 25 mM Tris-HCl, pH 7.3.

## GENE INFORMATION

<b>Gene Name</b>	COL23A1 collagen type XXIII alpha 1 chain [ Homo sapiens (human) ]
<b>Official Symbol</b>	COL23A1
<b>Synonyms</b>	COL23A1; collagen, type XXIII, alpha 1; collagen alpha-1(XXIII) chain; DKFZp434K0621; procollagen, type XXIII, alpha 1;
<b>Gene ID</b>	91522
<b>mRNA Refseq</b>	NM_173465
<b>Protein Refseq</b>	NP_775736
<b>MIM</b>	610043
<b>UniProt ID</b>	Q86Y22

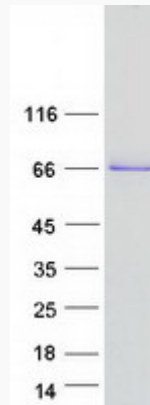
Tel: 1-631-559-9269 1-516-512-3133

Email: [info@creative-biomart.com](mailto:info@creative-biomart.com) Fax: 1-631-938-8127

45-1 Ramsey Road, Shirley, NY 11967, USA



SDS-PAGE



Tel: 1-631-559-9269 1-516-512-3133

Email: [info@creative-biomart.com](mailto:info@creative-biomart.com) Fax: 1-631-938-8127

45-1 Ramsey Road, Shirley, NY 11967, USA