

Recombinant Human COL25A1 Protein, GST-tagged

Cat. No. COL25A1-1644H **Lot. No.** (See product label)

SPECIFICATION

Product Overview	Human COL25A1 full-length ORF (AAH36669.1, 1 a.a. - 496 a.a.) recombinant protein with GST-tag at N-terminal.
Species	Human
Source	Wheat Germ
Description	This gene encodes a brain-specific membrane associated collagen. A product of proteolytic processing of the encoded protein, CLAC (collagenous Alzheimer amyloid plaque component), binds to amyloid beta-peptides found in Alzheimer amyloid plaques but CLAC inhibits rather than facilitates amyloid fibril elongation (PMID: 16300410). A study of over-expression of this collagen in mice, however, found changes in pathology and behavior suggesting that the encoded protein may promote amyloid plaque formation (PMID: 19548013). Multiple transcript variants encoding different isoforms have been found for this gene. [provided by RefSeq, Dec 2011]
Molecular Mass	77.6 kDa
AA Sequence	MLLKKHAGKGGGREPRSEDPTPAEQHCARTMPPCAVLAALLSVVAVVSCLYLGVKT NDLQARIAALESAGKAPSIHLLPDTLDHLKTMVQEKVERLLAQKSYEHMAKIRIAREA PSECNCPAGPPGKRGKRGRRGESGPPGQPGPQGPQPPGPKGDKGEQGDQGPRGPL GPPGQKGSIGAPGIPGMNGQKGEPGLPGAVGQNGIPGPKGEPGEQGEKGDAGEN GPKGDTGEKGDPGSSAAGIKGEPGESGRPGQKGEPGLPGLPGLPGIKGEPGFIGP QGEPGLPGLPGTKGERGEAGPPGRGERGEPGAPGPKGKQGESGTRGPKGSKGD

 Tel: 1-631-559-9269 1-516-512-3133

 Email: info@creative-biomart.com  Fax: 1-631-938-8127

 45-1 Ramsey Road, Shirley, NY 11967, USA

RGEKGDSSGAQQPRGPPGQKGDQGATEIIDYNGNLHEALQRITTLTVTGP GPPGPPGQ
 GLQGTKGEQGSPIPGMDGEQGLKGSKGDMDPGSQWNERRKRRFWNAGSTGS
 FYHRPTRPTRSPWPTWPHGTSWTSWTKGSIWLRKARIPGYRWSYGTPWPCRSQ
 RRKR

Applications	Enzyme-linked Immunoabsorbent Assay Western Blot (Recombinant protein) Antibody Production Protein Array
Notes	Best use within three months from the date of receipt of this protein.
Storage	Store at -80 centigrade. Aliquot to avoid repeated freezing and thawing.
Storage Buffer	50 mM Tris-HCl, 10 mM reduced Glutathione, pH=8.0 in the elution buffer.

GENE INFORMATION

Gene Name	COL25A1 collagen, type XXV, alpha 1 [Homo sapiens]
Official Symbol	COL25A1
Synonyms	COL25A1; collagen, type XXV, alpha 1; collagen alpha-1(XXV) chain; alzheimer disease amyloid-associated protein; collagenous Alzheimer amyloid plaque component; collagen-like Alzheimer amyloid plaque component; AMY; CLAC; CLACP; CLAC-P;
Gene ID	84570
mRNA Refseq	NM_001256074

 Tel: 1-631-559-9269 1-516-512-3133

 Email: info@creative-biomart.com  Fax: 1-631-938-8127

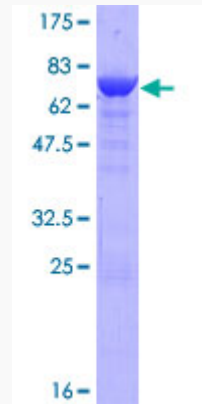
 45-1 Ramsey Road, Shirley, NY 11967, USA

Protein Refseq NP_001243003

MIM 610004

UniProt ID Q9BXS0

**Quality Control
Testing:**



12.5% SDS-PAGE Stained with Coomassie Blue.

 Tel: 1-631-559-9269 1-516-512-3133

 Email: info@creative-biomart.com  Fax: 1-631-938-8127

 45-1 Ramsey Road, Shirley, NY 11967, USA