

Recombinant Full Length Human COL28A1 Protein, C-Flag-tagged

Cat. No. COL28A1-1872HFL **Lot. No.** (See product label)

SPECIFICATION

Product Overview	Recombinant Full Length Human COL28A1 Protein, fused to Flag-tag at C-terminus, was expressed in Mammalian cells.
Species	Human
Source	Mammalian Cells
Description	COL28A1 belongs to a class of collagens containing von Willebrand factor (VWF; MIM 613160) type A (VWFA) domains.
Form	25 mM Tris HCl, pH 7.3, 100 mM glycine, 10% glycerol.
Molecular Mass	116.5 kDa
AA Sequence	<p>MWNRYFVFYLLLLSAFTSQTVSGQRKKGPKSNLLARKSDVQGSICFIDIVFIVDSSES SKIALFDKQKDF VDSLSDKIFQLTPGRSLEYDIKLAALQFSSSVQIDPPFSSWKDLQT FKQKVKSMNLIGQGTFSSYYAISNA TRLLKREGRKDGVKVLLMTDGDIDHPKNPDVQ SISEDARISGISFITIALSTVVNEAKLRLISGDSSSEP TLLLSDPTLVDKIQDRILDILFEK KCERKICECEKGDPGDPGPPGTHGNPDIKGERGPKGNPNAQKGEAG ERGPGGI PGYKGDKGERGECGKPGIKGDKGSPGYPGPKGPRGIQGITGPPGDPGPKGFQGNK GEPGPPGP YGSPGAPGIGQQGIKGERGQEGRPGAPGPIGVGEPGQPGPRGPEGV PGERGLPGEGFPKGEKGESEGPT GPQGLQGLSIKGEKGDIGPVGPQGPMPGIPGI GSQGEQGIQGPPIGPPGPGPAGQGLPGSKGEVGMGPTG PRGPVGIGVQGPKG EPGSIGLPGQPGVPGEDGAAGKKGEAGLPGARGPEGPPGKQPGPKGDEGKKGS</p>

 Tel: 1-631-559-9269 1-516-512-3133

 Email: info@creative-biomart.com  Fax: 1-631-938-8127

 45-1 Ramsey Road, Shirley, NY 11967, USA

KG NQQQRGLPGPEGPKGEPGIMGPFMPGTSIPGPPGPKGDRGGPGIPGFKGEP
 GLSIRGPKGVQQPRGPVG APGLKGDGYPGVPGPRGLPGPPGPMGLRGGVGDGTGAK
 GEPGVRGPPGSPGPRGVGTQGPKGDTGQKGLPGP PGPPGYGSQGIKGEQGPQG
 FPGPKGTMGHGLPGQKGEHGERGDVGGKKGDKGEIGEPGSPGKQGLQGPKGD LG
 LTKEEIIKLITEICGCGPKCKETPLELVFVIDSSESVGPENFQIIKNFVKTMADRVALDLA
 TARIGII NYSHKVEKVANLQFSSKDDFKLAVDNMQYLGEGETYTATALQAANDMFED
 ARPGVKKVALVITDGQTDSR DKEKLTEVVKNASDTNVEIFVIGVVKKNDPNFEIFHKE
 MNLIATDPEHVYQFDDFFTLQDTLKQKLFQKI CEDFDSYLVQIFGSSSPQPGFGMSG
 EELSESTPEPQKEISELSVTRDQDEDDKAPEPTWADDLPATTSS EATTTTPRPLLST
 PVDGAEDPRCLEALKPGNCGEYVVRWYYDKQVNSCARFWFSGCNGSGNRFNSEK
 ECQE TCIQG TRTRPLEQKLISEEDLAANDILDYKDDDDKV

Purity > 80% as determined by SDS-PAGE and Coomassie blue staining.

Stability Stable for 12 months from the date of receipt of the product under proper storage and handling conditions. Avoid repeated freeze-thaw cycles.

Storage Store at -80 centigrade.

Concentration >50 ug/mL as determined by microplate BCA method.

Preparation Recombinant protein was captured through anti-DDK affinity column followed by conventional chromatography steps.

Full Length Full L.

GENE INFORMATION

Gene Name COL28A1 collagen type XXVIII alpha 1 chain [Homo sapiens (human)]

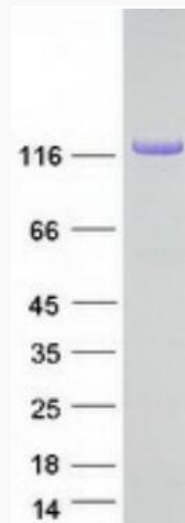
Official Symbol COL28A1

 Tel: 1-631-559-9269 1-516-512-3133

 Email: info@creative-biomart.com  Fax: 1-631-938-8127

 45-1 Ramsey Road, Shirley, NY 11967, USA

Synonyms	COL28
Gene ID	340267
mRNA Refseq	NM_001037763.3
Protein Refseq	NP_001032852.2
MIM	609996
UniProt ID	Q2UY09



Coomassie blue staining of purified COL28A1 protein.

Tel: 1-631-559-9269 1-516-512-3133

Email: info@creative-biomart.com Fax: 1-631-938-8127

45-1 Ramsey Road, Shirley, NY 11967, USA