

# Recombinant Human COL28A1 Protein, Myc/DDK-tagged, C13 and N15-labeled

**Cat. No.** COL28A1-4065H    **Lot. No.** (See product label)

## SPECIFICATION

<b>Product Overview</b>	COL28A1 MS Standard C13 and N15-labeled recombinant protein (NP_001032852) with a C-terminal MYC/DDK tag, was expressed in HEK293 cells.
<b>Species</b>	Human
<b>Source</b>	HEK293
<b>Description</b>	COL28A1 belongs to a class of collagens containing von Willebrand factor (VWF) type A (VWFA) domains.
<b>Molecular Mass</b>	116.5 kDa
<b>AA Sequence</b>	<p>MWNRYFVFYLLLLSAFTSQTVSGQRKKGPKSNLLARKSDVQGSICFIDIVFIVDSSES            SKIALFDKQKDFVDSLSDKIFQLTPGRSLEYDIKLAALQFSSSVQIDPPFSSWKDLQTF            KQKVKSMNLIGQGTFSSYYAISNATRLLKREGRKDGVKVLLMTDGIDHPKNPDVQSI            SEDARISGISFITALSTVVNEAKLRLISGDSSESPTLLLSDPTLVDKIQDRLDILFEKKC            ERKICECEKGDPGDPGPPGTHGNPGIKGERGPKGNPNAQKGEAGERGPGGIPGY            KGDKGERGECGKPGIKGDKGSPGYPGPKGPRGIQGITGPPGDPGPKGFQGNKGEP            GPPGPYGSPPGAPGIGQQGIKGERGQEGRPAPGPIGVGEPGQPGPRGPEGVPGE            RGLPGEGFPGPKGEKGESEPTGPQGLQGLSIKGEKGDIGVGPQGPMPGIPGIGSQ            GEQGIQGPPIGPPGPQGPAGQGLPGSKGEVGMGPTGPRGPVIGVQGPKEGPGSI            GLPGQPGVPGEDGAAGKKGEAGLPGARGPEGPPGKGGQPGPKGDEGKKGSKGNQ            GQRGLPGPEGPKGEPGIMGPFMPGTSIPGPPGPKGDRGGPGIPGFKGEPGLSIR</p>

 Tel: 1-631-559-9269    1-516-512-3133

 Email: [info@creative-biomart.com](mailto:info@creative-biomart.com)     Fax: 1-631-938-8127

 45-1 Ramsey Road, Shirley, NY 11967, USA

GPKGVQQPRGPVVGAPGLKGDGYPGVPGPRGLPGPPGPMGLRGVGDGTGAKGEPG  
 VRGPPGPSGRGVGTQGPKGDTGQKGLPGPPGPPGYGSQGIKGEQGPQGFPGP  
 KGTMGHGLPGQKGEHGERGDVGGKGDKEIGEPGSPGKQGLQGPKGDLGLTKEE  
 IIKLITEICGCGPKCKETPLELVFVIDSSESVGPENFQIIKNFVKTMADRVALDLATARIG  
 IINYSHKVEKVANLKQFSSKDDFKLAVDNMQYLGEGETYTATALQAANDMFEDARPG  
 VKKVALVITDGQTDSRDKEKLETVVKNASDTNVEIFVIGVVKKNDPNFEIFHKEMNLIA  
 TDPEHVYQFDDFFTLQDTLKQKLFQKICEDFDSYLVQIFGSSSPQPFGMSGGEELSE  
 STPEPQKEISELSVTRDQDEDDKAPEPTWADDLPATTSSEATTTTPRPLLSTPVDGA  
 EDPRCLEALKPGNCGEYVVRWYYDKQVNSCARFWFSGCNGSGNRFNSEKECQET  
 CIQGTRTRPLEQKLISEEDLAANDILDYKDDDDKV

**Purity** > 80% as determined by SDS-PAGE and Coomassie blue staining

**Stability** Stable for 3 months from receipt of products under proper storage and handling conditions.

**Storage** Store at -80 centigrade. Avoid repeated freeze-thaw cycles.

**Concentration** 50 µg/mL as determined by BCA

**Storage Buffer** 100 mM glycine, 25 mM Tris-HCl, pH 7.3.

## GENE INFORMATION

**Gene Name** COL28A1 collagen type XXVIII alpha 1 chain [ Homo sapiens (human) ]

**Official Symbol** COL28A1

**Synonyms** COL28A1; collagen type XXVIII alpha 1 chain; COL28; collagen alpha-1(XXVIII) chain; collagen, type XXVIII, alpha 1

 Tel: 1-631-559-9269 1-516-512-3133

 Email: [info@creative-biomart.com](mailto:info@creative-biomart.com)  Fax: 1-631-938-8127

 45-1 Ramsey Road, Shirley, NY 11967, USA

**Gene ID** 340267

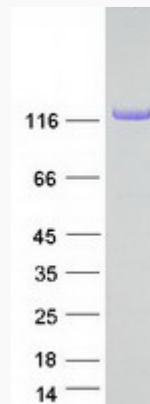
**mRNA Refseq** NM\_001037763

**Protein Refseq** NP\_001032852

**MIM** 609996

**UniProt ID** Q2UY09

**SDS-PAGE**



 Tel: 1-631-559-9269 1-516-512-3133

 Email: [info@creative-biomart.com](mailto:info@creative-biomart.com)  Fax: 1-631-938-8127

 45-1 Ramsey Road, Shirley, NY 11967, USA