

Recombinant Rabbit COL2A1 protein, His & GST-tagged

Cat. No. COL2A1-7926R Lot. No. (See product label)

SPECIFICATION

Product Overview	Recombinant Rabbit COL2A1 aa. (Leu1259~Val1449) fused with N-terminal His & GST tag was produced in E. coli cells.
Species	Rabbit
Source	E.coli
ProteinLength	Leu1259~Val1449
Form	Freeze-dried powder
Molecular Mass	51kDa as determined by SDS-PAGE reducing conditions.
Endotoxin	<1.0EU per 1ug (determined by the LAL method)
Purity	>98%
Characteristic	The isoelectric point is 8.5.
Applications	Positive Control; Immunogen; SDS-PAGE; WB
Stability	The thermal stability is described by the loss rate of the target protein. The loss rate was determined by accelerated thermal degradation test, that is, incubate the protein at 37°C for 48h, and no obvious degradation and precipitation were observed. (Referring from China Biological Products Standard, which was calculated by the

 Tel: 1-631-559-9269 1-516-512-3133

 Email: info@creative-biomart.com  Fax: 1-631-938-8127

 45-1 Ramsey Road, Shirley, NY 11967, USA

Arrhenius equation.) The loss of this protein is less than 5% within the expiration date under appropriate storage condition.

Storage

Avoid repeated freeze/thaw cycles. Store at 2-8°C for one month. Aliquot and store at -80°C for 12 months.

Concentration

200µg/mL

Storage Buffer

100mM NaHCO₃, 500mM NaCl, pH8.3, containing 1mM EDTA, 1mM DTT, 0.01% sarcosyl, 5%Trehalose and Proclin300.

Reconstitution

Reconstitute in 100mM NaHCO₃, 500mM NaCl (pH8.3) to a concentration of 0.1-1.0 mg/mL. Do not vortex.

GENE INFORMATION

Gene Name

COL2A1 collagen type II alpha 1 chain [*Oryctolagus cuniculus* (rabbit)]

Official Symbol

COL2A1

Synonyms

COL2A1; collagen alpha-1(II) chain; collagen type IIA; collagen, type II, alpha 1; pro alpha1 type II collagen

Gene ID

100009005

mRNA Refseq

NM_001195671.1

Protein Refseq

NP_001182600.1

UniProt ID

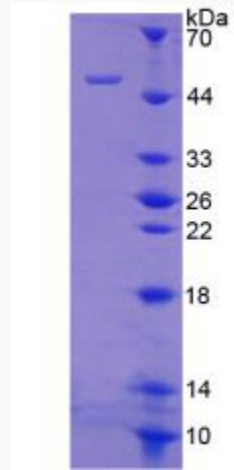
G1T5V9

 Tel: 1-631-559-9269 1-516-512-3133

 Email: info@creative-biomart.com  Fax: 1-631-938-8127

 45-1 Ramsey Road, Shirley, NY 11967, USA

SDS-PAGE



 Tel: 1-631-559-9269 1-516-512-3133

 Email: info@creative-biomart.com  Fax: 1-631-938-8127

 45-1 Ramsey Road, Shirley, NY 11967, USA