

## Recombinant Human COL2a1 protein, His-tagged

Cat. No. COL2a1-1284H Lot. No. (See product label)

### SPECIFICATION

<b>Product Overview</b>	Recombinant Human COL2a1 protein(Gln26~Ala181), fused with N-terminal His Tag, was expressed in E.coli.
<b>Species</b>	Human
<b>Source</b>	E.coli
<b>ProteinLength</b>	Gln26~Ala181
<b>Form</b>	20mM Tris, 150mM NaCl, pH8.0, containing 1mM EDTA, 1mM DTT, 0.01% SKL, 5% Trehalose and Proclin300.
<b>Molecular Mass</b>	13kDa
<b>Endotoxin</b>	<1.0EU per 1g (determined by the LAL method)
<b>Purity</b>	> 95%
<b>Storage</b>	Avoid repeated freeze/thaw cycles. Store at 2-8°C for one month. Aliquot and store at -80°C for 12 months.
<b>Reconstitution</b>	Reconstitute in 20mM Tris, 150mM NaCl (pH8.0) to a concentration of 0.1-1.0 mg/mL. Do not vortex.

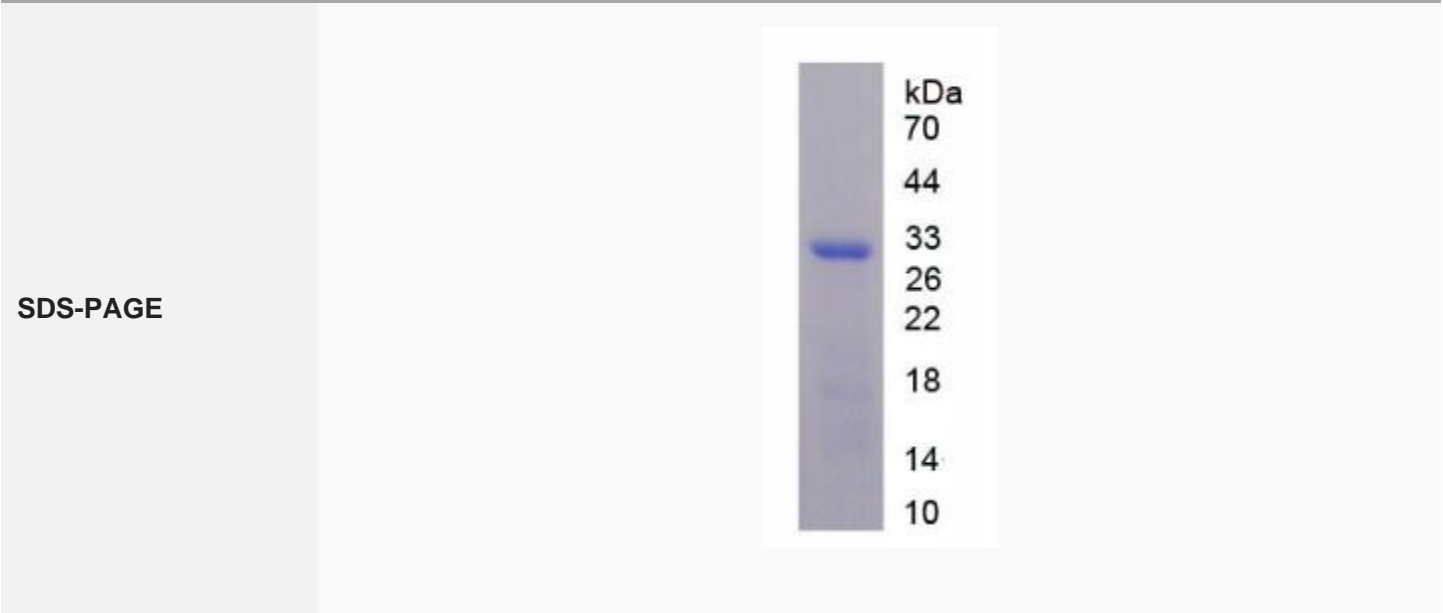
### GENE INFORMATION

 Tel: 1-631-559-9269 1-516-512-3133

 Email: [info@creative-biomart.com](mailto:info@creative-biomart.com)  Fax: 1-631-938-8127

 45-1 Ramsey Road, Shirley, NY 11967, USA

<b>Gene Name</b>	COL2A1 collagen, type II, alpha 1 [ Homo sapiens ]
<b>Official Symbol</b>	COL2a1
<b>Synonyms</b>	COL2A1; collagen, type II, alpha 1; collagen, type II, alpha 1 (primary osteoarthritis, spondyloepiphyseal dysplasia, congenital) , SEDC; collagen alpha-1(II) chain; chondrocalcin; cartilage collagen; alpha-1 type II collagen; collagen II, alpha-1 polypeptide; AOM; ANFH; SEDC; COL11A3; MGC131516;
<b>Gene ID</b>	1280
<b>mRNA Refseq</b>	NM_001844
<b>Protein Refseq</b>	NP_001835
<b>UniProt ID</b>	P02458



Tel: 1-631-559-9269 1-516-512-3133

Email: [info@creative-biomart.com](mailto:info@creative-biomart.com) Fax: 1-631-938-8127

45-1 Ramsey Road, Shirley, NY 11967, USA