

Recombinant Human COL3A1 protein, His-tagged

Cat. No. COL3A1-01H Lot. No. (See product label)

SPECIFICATION

Product Overview	Recombinant Human COL3A1 protein, fused to His-tag, was expressed in HEK293.
Species	Human
Source	HEK293
ProteinLength	1466 aa
Description	This gene encodes the pro-alpha1 chains of type III collagen, a fibrillar collagen that is found in extensible connective tissues such as skin, lung, uterus, intestine and the vascular system, frequently in association with type I collagen. Mutations in this gene are associated with Ehlers-Danlos syndrome type IV, and with aortic and arterial aneurysms.
Form	Liquid
AA Sequence	<p>QYDSYDVKSGVAVGGLAGYPGPAGPPGPPGPPGTSGHPGSPGSPGYQGPPGEPG QAGPSGPPGPPGAIGPSGPAGKDGESGRPGRPERGLPGPPGIKGPAGIPGFPGM KGRHGFDRNGEKGETGAPGLKGENGLPGENGAPGPMGPRGAPGERGRPLPG AAGARGNDGARGSDGQPGPPGPPGTAGFPGSPGAKGEVGPAGSPGSNGAPGQR GEPGPQGHAGAQQPPGPPGINGSPPGGKEMGPAGIPGAPGLMGARGPPGPAGAN GAPGLRGGAGEPGKNGAKGEPGRGERGEAGIPGVPGAKGEDGKDGSPGEPGAN GLPGAAGERGAPGFRGPAGPNGIPGEKGPAGERGAPGPAGPRGAAGEPGRDGV GGPGMRGMPGSPGGPGSDGKPGPPGSQGESGRPGPPGSPGPRGQPGVMGFPG PKGNDGAPGKNGERGGPGGPGPQGPPGKNGETGPQGGPPTGPGGDKGDTGPP</p>

 Tel: 1-631-559-9269 1-516-512-3133

 Email: info@creative-biomart.com  Fax: 1-631-938-8127

 45-1 Ramsey Road, Shirley, NY 11967, USA

GPQGLQGLPGTGGPPGENGKPGEPGPKGDAGAPGAPGGKGDAGAPGERGPPGL
 AGAPGLRGGAGPPGPEGGKGAAGPPGPPGAAGTPGLQGMPPGERGGLGSPGPKG
 DKGEPGGPGADGVPGKDGPRGPTGPIGPPGAPGQPGDKGEGGAPGLPGIAGPRG
 SPGERGETGPPGAPGFPAGQNGEPGGKGERGAPGEKGEPPGPPGVAGPPGGS
 GPAGPPGPQGVKGERGSPGGPGAAGFPGARGLPGPPGSNGNPGPPGSPGSPGK
 DGPPGPAGNTGAPGSPGVSGPKGDAGQPGEKGSPPGAQPPGAPGLGIAGITGA
 RGLAGPPGMPGPRGSPGPQGVKGESGKPGANGLSGERGPPGPQGLPGLAGTAG
 EPGRDGNPGSDGLPGRDGSPPGGKDRGENGSPGAPGAPGHPGPPGPVGPAGKS
 GDRGESGPAGPAGAPGAPGSRGAPGPQGPGRGDKGETGERGAAGIKGHRGFPGN
 PGAPGSPGPAGQQGAIGSPGPAGPRGPVGPSPGPPGKDGTSGHPPGPIGPPGPRGN
 RGERGSEGSPPGHPGQPPGPPGAPGPCCGGVGAAAIAIGIGGEKAGGFAPYYGG
 GGGSHHHHHH*

Purity > 90 %

Storage Store at -20 centigrade to -80 centigrade

Storage Buffer PBS, pH 6.8

GENE INFORMATION

Official Symbol [COL3A1](#)

Synonyms EDS4A; EDSVASC; PMGEDSV

Gene ID [1281](#)

mRNA Refseq [NM_000090](#)

Protein Refseq [NP_000081](#)

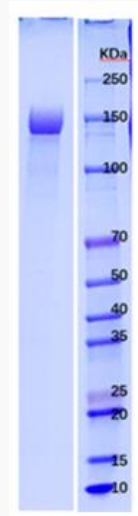
 Tel: 1-631-559-9269 1-516-512-3133

 Email: info@creative-biomart.com  Fax: 1-631-938-8127

 45-1 Ramsey Road, Shirley, NY 11967, USA

MIM 120180

UniProt ID P02461



Tel: 1-631-559-9269 1-516-512-3133

Email: info@creative-biomart.com Fax: 1-631-938-8127

45-1 Ramsey Road, Shirley, NY 11967, USA