

## Recombinant Human COL3A1 Protein, GST-tagged

Cat. No. COL3A1-1650H Lot. No. (See product label)

### SPECIFICATION

**Product Overview** Human COL3A1 full-length ORF ( AAH28178, 25 a.a. - 1163 a.a.) recombinant protein with GST-tag at N-terminal.

**Species** Human

**Source** Wheat Germ

**Description** This gene encodes the pro-alpha1 chains of type III collagen, a fibrillar collagen that is found in extensible connective tissues such as skin, lung, uterus, intestine and the vascular system, frequently in association with type I collagen. Mutations in this gene are associated with Ehlers-Danlos syndrome types IV, and with aortic and arterial aneurysms. Two transcripts, resulting from the use of alternate polyadenylation signals, have been identified for this gene. [provided by R. Dalgleish, Feb 2008]

**Molecular Mass** 151.03 kDa

**AA Sequence**

```

QEAVEGGCSHLGQSYADRDVWKPEPCQICVCDSGSVLCDDIICDDQELDCPNPEIP
FGECCA VCPQPPTAPTRPPNGQGPQGPKGDPGPPGIPGRNGDPGIPGQPGSPGS
PGPPGICESCPTGPQNYSPQYDSYDVKSGVAVGGLAGYGPAGPPGPPGPPGTSG
HPGSPGSPGYQQPPGEPGQAGPSGPPGPPGAIGPSGPAGKDGESGRPGRPGER
GLPGPPGIKGPAGIPGFPGMKGHRGFDGRNGEKGETGAPGLKGENGLPGENGAP
GPMGPRGAPGERGRPGLPGAAGARGNDGARGSDGQPGPPGPPGTAGFPGPSGA
KGEVGPAGSPGSNGAPGQRGEPGPQGHAGAQQPPGPPGINGSPPGGKMGMPAG
IPGAPGLMGARGPPGPAGANGAPGLRGGAGEPGKNGAKGEPGPRGERGEAGIPG
    
```

 Tel: 1-631-559-9269 1-516-512-3133

 Email: [info@creative-biomart.com](mailto:info@creative-biomart.com)  Fax: 1-631-938-8127

 45-1 Ramsey Road, Shirley, NY 11967, USA

VPGAKGEDGKDGSPGEPGANGLPGAAGERGAPGFRGPAGPNGIPGEKGPAGERG  
 APGPAGPRGAAGEPGRDGVPGGPGMRGMPGSPGGPGSDGKPGPPGSQGESGR  
 PGPPGPSGRGQPGVMGFPGPKGNDGAPGKNGERGGPGGPGPQGGPPGKNGET  
 GPQGGPPTGPGGDKGDTGPPGPQGLQGLPGTGGPPGENGKPGEPGPKGDAGA  
 PGAPGGKGDAGAPGERGPPGLAGAPGLRGGAGPPGPEGGKGAAGPPGPPGAAG  
 TPGLQGMPGERGGLGSPGPKGDKGEPGGPGADGVPGKDGPRGPTGPIGPPGPA  
 GQPGDKGEGGAPGLPGIAGPRGSPGERGETGPPGPAGFFGAPGQNGEPGGKGE  
 RGAPGEKGEGGPPGVAGPPGKDGTSGHPPGPIGPPGPRGNRGERGSEGSPGHPG  
 QGPPGPPGAPGPCCGGVGAAAIAGIGGEKAGGFAPYYGDEPMDFKINTDEIMTSL  
 KSVNGQIESLISPDGSRKNPARNCRDLKFCHPELKSGEYWVDPNQGCKLDAIKVFC  
 NMETGETCISANPLNVPRKHWWTDSSAEKKHVWFGESMDGGFQFSYGNPELPEL  
 VLDVQLAFLRLLSSRASQNITYHCKNSIAYMDQASGNVKKALKLMGSNEGEFKAEGN  
 SKFTYTVLEDGCTKHTGEWSKTVFEYRTRKAVRLPIVDIAPYDIGGPDQEFVVDVGP  
 VCFL

**Applications**

Enzyme-linked Immunoabsorbent Assay  
 Western Blot (Recombinant protein)  
 Antibody Production  
 Protein Array

**Notes**

Best use within three months from the date of receipt of this protein.

**Storage**

Store at -80 centigrade. Aliquot to avoid repeated freezing and thawing.

**Storage Buffer**

50 mM Tris-HCl, 10 mM reduced Glutathione, pH=8.0 in the elution buffer.

## GENE INFORMATION

**Gene Name**

COL3A1 collagen, type III, alpha 1 [ Homo sapiens ]

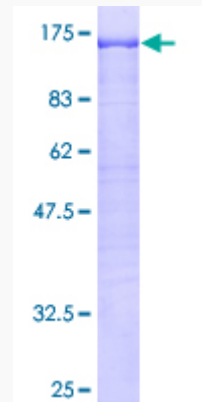
 Tel: 1-631-559-9269 1-516-512-3133

 Email: [info@creative-biomart.com](mailto:info@creative-biomart.com)  Fax: 1-631-938-8127


 45-1 Ramsey Road, Shirley, NY 11967, USA

<b>Official Symbol</b>	COL3A1
<b>Synonyms</b>	COL3A1; collagen, type III, alpha 1; EDS4A, Ehlers Danlos syndrome type IV, autosomal dominant; collagen alpha-1(III) chain; collagen, fetal; alpha1 (III) collagen; Ehlers-Danlos syndrome type IV, autosomal dominant; EDS4A; FLJ34534;
<b>Gene ID</b>	1281
<b>mRNA Refseq</b>	NM_000090
<b>Protein Refseq</b>	NP_000081
<b>MIM</b>	120180
<b>UniProt ID</b>	P02461

**Quality Control  
Testing:**



12.5% SDS-PAGE Stained with Coomassie Blue.

 Tel: 1-631-559-9269 1-516-512-3133

 Email: [info@creative-biomart.com](mailto:info@creative-biomart.com)  Fax: 1-631-938-8127

 45-1 Ramsey Road, Shirley, NY 11967, USA