

Recombinant Human COL6A1 Protein, Myc/DDK-tagged

Cat. No. COL6A1-02H Lot. No. (See product label)

SPECIFICATION

Product Overview	Recombinant protein of human collagen, type VI, alpha 1 (COL6A1) with a C-Myc/DDK tag was expressed in HEK293T.
Species	Human
Source	HEK293
Description	<p>The collagens are a superfamily of proteins that play a role in maintaining the integrity of various tissues. Collagens are extracellular matrix proteins and have a triple-helical domain as their common structural element. Collagen VI is a major structural component of microfibrils. The basic structural unit of collagen VI is a heterotrimer of the alpha1(VI), alpha2(VI), and alpha3(VI) chains. The alpha2(VI) and alpha3(VI) chains are encoded by the COL6A2 and COL6A3 genes, respectively. The protein encoded by this gene is the alpha 1 subunit of type VI collagen (alpha1(VI) chain). Mutations in the genes that code for the collagen VI subunits result in the autosomal dominant disorder, Bethlem myopathy.</p>
Molecular Mass	106.4 kDa
Purity	> 80% as determined by SDS-PAGE and Coomassie blue staining
Stability	Stable for 12 months from the date of receipt of the product under proper storage and handling conditions. Avoid repeated freeze-thaw cycles.
Storage	Store at -80 centigrade.

 Tel: 1-631-559-9269 1-516-512-3133

 Email: info@creative-biomart.com  Fax: 1-631-938-8127

 45-1 Ramsey Road, Shirley, NY 11967, USA

Concentration >50 µg/mL as determined by microplate BCA method

Storage Buffer 25 mM Tris.HCl, pH 7.3, 100 mM glycine, 10% glycerol

GENE INFORMATION

Gene Name COL6A1 collagen type VI alpha 1 chain [Homo sapiens (human)]

Official Symbol COL6A1

Synonyms COL6A1; collagen type VI alpha 1 chain; OPLL; BTHLM1; UCHMD1; collagen alpha-1(VI) chain; alpha 1 (VI) chain (61 AA); collagen VI, alpha-1 polypeptide; collagen, type VI, alpha 1; epididymis secretory sperm binding protein

Gene ID 1291

mRNA Refseq NM_001848

Protein Refseq NP_001839

MIM 120220

UniProt ID P12109

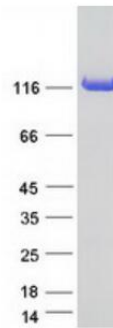
 Tel: 1-631-559-9269 1-516-512-3133

 Email: info@creative-biomart.com  Fax: 1-631-938-8127

 45-1 Ramsey Road, Shirley, NY 11967, USA



SDS-PAGE



Tel: 1-631-559-9269 1-516-512-3133

Email: info@creative-biomart.com Fax: 1-631-938-8127

45-1 Ramsey Road, Shirley, NY 11967, USA