

Native Bovine Collagen Type VI

Cat. No. COL6A1-03B **Lot. No.** (See product label)

SPECIFICATION

Species	Bovine
Description	<p>In muscle tissue, collagen serves as a major component of the endomysium. Collagen constitutes one to two percent of muscle tissue, and accounts for 6% of the weight of strong, tendinous muscles. A collagen may be defined as a protein containing sizable domain(s) of triple-helical conformation. Type IV collagen is a major macromolecular constituent of basement membranes and can be readily isolated from basement-membrane-rich tissues or highly vascularized tissues such as the placental villi. This collagen appears to be largely restricted to structures identifiable as basement membranes. In contrast, type VI collagen appears to be prevalent in several tissues even though it has been isolated largely from placental villi preparations. The extent to which type VII and VIII collagens are distributed is not known.</p>
Form	Liquid (sterile filtered)
Purity	This product has been prepared from Bovine Placenta and is chromatographically and immunologically pure. This product reacts with anti-Collagen Type VI.
Application	Dot Blot
Storage	Store vial at 4 centigrade prior to opening. This product is stable at 4 centigrade as an undiluted liquid. Dilute only prior to immediate use.
Storage Buffer	0.5 M Acetic Acid

 Tel: 1-631-559-9269 1-516-512-3133

 Email: info@creative-biomart.com  Fax: 1-631-938-8127

 45-1 Ramsey Road, Shirley, NY 11967, USA

Preservative 0.01% (w/v) Sodium Azide

Concentration 1.0 mg/mL by modified Lowry assay

GENE INFORMATION

Gene Name COL6A1 collagen type VI alpha 1 chain [Bos taurus (domestic cattle)]

Official Symbol COL6A1

Synonyms COL6A1; collagen type VI alpha 1 chain; collagen alpha-1(VI) chain; collagen, type VI, alpha 1

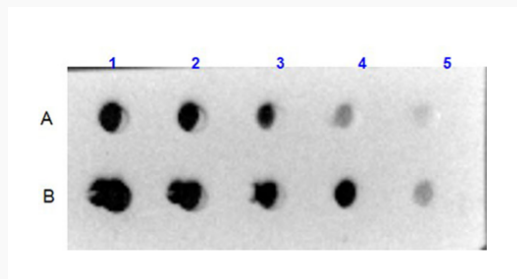
Gene ID 511422

mRNA Refseq NM_001143865

Protein Refseq NP_001137337

UniProt ID E1BI98

Dot Blot



 Tel: 1-631-559-9269 1-516-512-3133

 Email: info@creative-biomart.com  Fax: 1-631-938-8127

 45-1 Ramsey Road, Shirley, NY 11967, USA