

Recombinant Human COL6A1 Protein, GST-tagged

Cat. No. COL6A1-1659H Lot. No. (See product label)

SPECIFICATION

Product Overview	Human COL6A1 partial ORF (AAH52575, 919 a.a. - 1028 a.a.) recombinant protein with GST-tag at N-terminal.
Species	Human
Source	Wheat Germ
Description	<p>The collagens are a superfamily of proteins that play a role in maintaining the integrity of various tissues. Collagens are extracellular matrix proteins and have a triple-helical domain as their common structural element. Collagen VI is a major structural component of microfibrils. The basic structural unit of collagen VI is a heterotrimer of the alpha1(VI), alpha2(VI), and alpha3(VI) chains. The alpha2(VI) and alpha3(VI) chains are encoded by the COL6A2 and COL6A3 genes, respectively. The protein encoded by this gene is the alpha 1 subunit of type VI collagen (alpha1(VI) chain). Mutations in the genes that code for the collagen VI subunits result in the autosomal dominant disorder, Bethlem myopathy. [provided by RefSeq, Jul 2008]</p>
Molecular Mass	37.84 kDa
AA Sequence	ALGYVTRFYREASSGAACKRLLLFSDGNSQGATPAAIEKAVQEAQRAGIEIFVVVVG RQVNEPHIRVLVTGKTAEYDVAYGESHLFRVPSYQALLRGVFHQTVSRKVALG
Applications	<p>Enzyme-linked Immunoabsorbent Assay</p> <p>Western Blot (Recombinant protein)</p> <p>Antibody Production</p>

 Tel: 1-631-559-9269 1-516-512-3133

 Email: info@creative-biomart.com  Fax: 1-631-938-8127

 45-1 Ramsey Road, Shirley, NY 11967, USA

Protein Array

Notes	Best use within three months from the date of receipt of this protein.
Storage	Store at -80 centigrade. Aliquot to avoid repeated freezing and thawing.
Storage Buffer	50 mM Tris-HCl, 10 mM reduced Glutathione, pH=8.0 in the elution buffer.

GENE INFORMATION

Gene Name	COL6A1 collagen, type VI, alpha 1 [Homo sapiens]
Official Symbol	COL6A1
Synonyms	COL6A1; collagen, type VI, alpha 1; collagen alpha-1(VI) chain; alpha 1 (VI) chain (61 AA); collagen VI, alpha-1 polypeptide; OPLL;
Gene ID	1291
mRNA Refseq	NM_001848
Protein Refseq	NP_001839
MIM	120220
UniProt ID	P12109

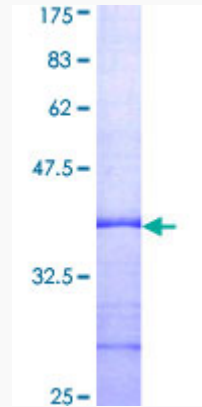
 Tel: 1-631-559-9269 1-516-512-3133

 Email: info@creative-biomart.com  Fax: 1-631-938-8127

 45-1 Ramsey Road, Shirley, NY 11967, USA

Quality Control

Testing:



12.5% SDS-PAGE Stained with Coomassie Blue.

 Tel: 1-631-559-9269 1-516-512-3133

 Email: info@creative-biomart.com  Fax: 1-631-938-8127

 45-1 Ramsey Road, Shirley, NY 11967, USA