

# Recombinant Human COL6A1 Protein, Myc/DDK-tagged, C13 and N15-labeled

**Cat. No.** COL6A1-4930H    **Lot. No.** (See product label)

## SPECIFICATION

<b>Product Overview</b>	COL6A1 MS Standard C13 and N15-labeled recombinant protein (NP_001839) with a C-terminal MYC/DDK tag, was expressed in HEK293 cells.
<b>Species</b>	Human
<b>Source</b>	HEK293
<b>Description</b>	<p>The collagens are a superfamily of proteins that play a role in maintaining the integrity of various tissues. Collagens are extracellular matrix proteins and have a triple-helical domain as their common structural element. Collagen VI is a major structural component of microfibrils. The basic structural unit of collagen VI is a heterotrimer of the alpha1(VI), alpha2(VI), and alpha3(VI) chains. The alpha2(VI) and alpha3(VI) chains are encoded by the COL6A2 and COL6A3 genes, respectively. The protein encoded by this gene is the alpha 1 subunit of type VI collagen (alpha1(VI) chain). Mutations in the genes that code for the collagen VI subunits result in the autosomal dominant disorder, Bethlem myopathy.</p>
<b>Molecular Mass</b>	108.5 kDa
<b>AA Sequence</b>	<p>MRAARALLPLLLQACWTAQAQDEPETPRAVAFQDCPVDLFFVLDTSESVALRLKPYG  ALVDKVKSFTRKRFIDNLRDRYYRCRNLVWNAGALHYSDEVEIIQGLTRMPGGRDAL  KSSVDAVKYFGKGYTDCAIKKGLEQLLVGGSHLKENKYLIVVTDGHPLEGYKEPCG  GLEDVAVNEAKHLGVKVFVAITPDHLEPRLSIIATDHTYRRNFTAADWGQSRDAEEAI</p>

 Tel: 1-631-559-9269    1-516-512-3133

 Email: [info@creative-biomart.com](mailto:info@creative-biomart.com)     Fax: 1-631-938-8127

 45-1 Ramsey Road, Shirley, NY 11967, USA

SQTIDTIVDMIKNNVEQVCCSFECQPARGPPGLRGDPGFEGERGKPGPLPGEKGEAG  
 DPGRPGDLGPVGYQGMKGEKGSRGEKGSRGPKGYKGEKGRGIDGVDGVKEM  
 GYPGLPGCKGSPGFDGIQPPGPKGDPGAFGLKGEKGEPEGADGEAGRPGSSGPS  
 GDEGQPGEPPGGEKGEAGDEGNPGPDGAPGERGGPPGERGPRGTPGTRGPRGD  
 PGEAGPQGDQGREGPVGVPGDPGEAGPIGPKGYRGDEGPPGSEGARGAPGPAG  
 PPGDPGLMGERGEDGPAGNGTEGFPFGYPGNRGAPGINGTKGYPLKGDGE  
 AGDPGDDNNDIAPRGVKGAKGYRGEPEGPQPPGHQGPDPDECEILDIIIMKMCSC  
 CECKCGPIDLLFVLDSSSEISGLQNFIEIAKDFVVKVIDRLSRDELVKFEPGQSYAGVVQ  
 YSHSQMQEHVSLRSPSIRNVQELKEAIKSLQWMAGGTFTGEALQYTRDQLLPPSPN  
 NRIALVITDGRSQTQRDTTPLNVLCSPGIQVSVGIKDVDFIPGSDQLNVISCQGLAP  
 SQGRPGLSLVKENYAELLEDAFLKNVTAQICIDKKCPDYTCPITFSSPADITILLDGS  
 A SVGSHNFDTTKRFKRLAERFLTAGRTDPAHDVRAVAVVQYSGTGQQRPERASLQFL  
 QNYTALASAVDAMDFINDATDVNDALGYVTRFYREASSGAAKRLLLFSDGNSQGA  
 TPAAIEKAVQEAQRAGIEIFVVVVGRQVNEPHIRVLVTGKTAEYDVAYGESHLFRVPS  
 YQALLRGVFHQTVSRKVALGTRTRPLEQKLISEEDLAANDILDYKDDDDKV

**Purity** > 80% as determined by SDS-PAGE and Coomassie blue staining

**Stability** Stable for 3 months from receipt of products under proper storage and handling conditions.

**Storage** Store at -80 centigrade. Avoid repeated freeze-thaw cycles.

**Concentration** 50 µg/mL as determined by BCA

**Storage Buffer** 100 mM glycine, 25 mM Tris-HCl, pH 7.3.

## GENE INFORMATION

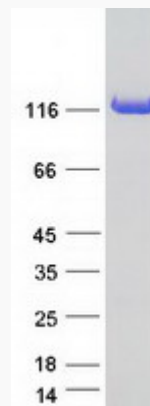
**Gene Name** COL6A1 collagen type VI alpha 1 chain [ Homo sapiens (human) ]

 Tel: 1-631-559-9269 1-516-512-3133

 Email: [info@creative-biomart.com](mailto:info@creative-biomart.com)  Fax: 1-631-938-8127

 45-1 Ramsey Road, Shirley, NY 11967, USA

<b>Official Symbol</b>	COL6A1
<b>Synonyms</b>	COL6A1; collagen, type VI, alpha 1; collagen alpha-1(VI) chain; alpha 1 (VI) chain (61 AA); collagen VI, alpha-1 polypeptide; OPLL;
<b>Gene ID</b>	1291
<b>mRNA Refseq</b>	NM_001848
<b>Protein Refseq</b>	NP_001839
<b>MIM</b>	120220
<b>UniProt ID</b>	P12109

**SDS-PAGE**


 Tel: 1-631-559-9269 1-516-512-3133

 Email: [info@creative-biomart.com](mailto:info@creative-biomart.com)  Fax: 1-631-938-8127

 45-1 Ramsey Road, Shirley, NY 11967, USA