

Recombinant Full Length Human COL6A2 Protein, C-Flag-tagged

Cat. No. COL6A2-1544HFL **Lot. No.** (See product label)

SPECIFICATION

Product Overview	Recombinant Full Length Human COL6A2 Protein, fused to Flag-tag at C-terminus, was expressed in Mammalian cells.
Species	Human
Source	Mammalian Cells
Description	This gene encodes one of the three alpha chains of type VI collagen, a beaded filament collagen found in most connective tissues. The product of this gene contains several domains similar to von Willebrand Factor type A domains. These domains have been shown to bind extracellular matrix proteins, an interaction that explains the importance of this collagen in organizing matrix components. Mutations in this gene are associated with Bethlem myopathy and Ullrich scleroatonic muscular dystrophy. Three transcript variants have been identified for this gene.
Form	25 mM Tris HCl, pH 7.3, 100 mM glycine, 10% glycerol.
Molecular Mass	95.3 kDa
AA Sequence	MLQGTCSVLLLLWGILGAIQAQQQEVISPDTTTERNNNNCPEKTD CPIHVYFVLDTSESVT MQSPTDILLFHM KQFVPQFISQLQNEFYLDQVALSWRYGGLHFSDQVEVFSPPGSD RASFIKNLQGISSFRRGTFTDCALAN MTEQIRQDRSKGTVHFVAVVITDGHVTGSPCG GIKLQAERAREEGIRLFAVAPNQLKEQGLRDIASPHE LYRNDYATMLPDSTEINQ DTINRIIKVMKHEAYGECYKVCLEIPGSPGPKGYRGQKGAKGNMGEPGEPG QKG

 Tel: 1-631-559-9269 1-516-512-3133

 Email: info@creative-biomart.com  Fax: 1-631-938-8127

 45-1 Ramsey Road, Shirley, NY 11967, USA

RQGDPGIEGPIGFPGPKGVPGFKGEKGEFGADGRKGGAPLAGKNGTDGQKGLG
 RIGPPGCKGDPGN RGPDGYPGEAGSPGERGDQGGKGDPRGRRGPPGEIGAK
 GSKGYQGNNGAPGSPGVKGAKGGPGPRGPK GEPGRRGDPGKSGSPGSDGPKG
 EKGDPGPEGPRGLAGEVGNKGAKGDRGLPGRGPQGALGEPGKQGSRG DPGDA
 GPRGDSGQPGPKGDPGRPGFSYPGPRGAPGEKGEPPRGPEGGRGDFGLKGEPP
 GRKGEKGEPADP GPPGEPGPRGPRGVPGPEGEPGPPGDPGLTECDVMTYVRET
 CGCCDCEKRCGALDVVVIDSSESIGYTN FTLEKNFVINVVNRLGAIKDPKSETGT
 RVGVVQYSHEGTFEAIQLDDEHIDSLSSFKEAVKNLEWIAGG TWTPSALKFAYDRLI
 KESRRQKTRVFAVVITDGRHDPRDDDLNLRALCDRDVTVAIGIGDMFHEKHESE N
 LYSIACDKPQQVRNMTLFSDLVAEKFIDDMEDVLCPPQIVCPDLPCQTDAPWPGG
 EPPVTFLRTEEGP DATFPRTIPLIQQLLNATELTQDPAAYSQLVAVLVYTAERAKFAT
 GVERQDWMELFIDTFKLVHRDIVGD
 PETALALCSGPTRRRLEQKLISEEDLAANDILDYKDDDDKV

Purity	> 80% as determined by SDS-PAGE and Coomassie blue staining.
Stability	Stable for 12 months from the date of receipt of the product under proper storage and handling conditions. Avoid repeated freeze-thaw cycles.
Storage	Store at -80 centigrade.
Concentration	>50 ug/mL as determined by microplate BCA method.
Preparation	Recombinant protein was captured through anti-DDK affinity column followed by conventional chromatography steps.
Protein Families	Secreted Protein
Protein Pathways	ECM-receptor interaction, Focal adhesion

 Tel: 1-631-559-9269 1-516-512-3133

 Email: info@creative-biomart.com  Fax: 1-631-938-8127

 45-1 Ramsey Road, Shirley, NY 11967, USA

Full Length Full L.

GENE INFORMATION

Gene Name COL6A2 collagen type VI alpha 2 chain [Homo sapiens (human)]

Official Symbol COL6A2

Synonyms UCMD1; BTHLM1; PP3610

Gene ID 1292

mRNA Refseq NM_058174.3

Protein Refseq NP_478054.2

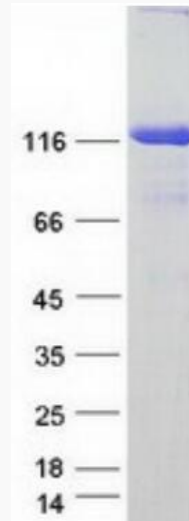
MIM 120240

UniProt ID P12110

 Tel: 1-631-559-9269 1-516-512-3133

 Email: info@creative-biomart.com  Fax: 1-631-938-8127

 45-1 Ramsey Road, Shirley, NY 11967, USA



Coomassie blue staining of purified COL6A2 protein.

 Tel: 1-631-559-9269 1-516-512-3133

 Email: info@creative-biomart.com  Fax: 1-631-938-8127

 45-1 Ramsey Road, Shirley, NY 11967, USA