

Recombinant Human COL6A2 Protein, GST-tagged

Cat. No. COL6A2-1660H Lot. No. (See product label)

SPECIFICATION

Product Overview	Human COL6A2 full-length ORF (AAH02484, 1 a.a. - 425 a.a.) recombinant protein with GST-tag at N-terminal.
Species	Human
Source	Wheat Germ
Description	<p>This gene encodes one of the three alpha chains of type VI collagen, a beaded filament collagen found in most connective tissues. The product of this gene contains several domains similar to von Willebrand Factor type A domains. These domains have been shown to bind extracellular matrix proteins, an interaction that explains the importance of this collagen in organizing matrix components. Mutations in this gene are associated with Bethlem myopathy and Ullrich scleroatonic muscular dystrophy. Three transcript variants have been identified for this gene. [provided by RefSeq, Jul 2008]</p>
Molecular Mass	72.49 kDa
AA Sequence	<p>MTYVRETCGCCDCEKRCGALDVVFVIDSSESIGYTNFTLEKNFVINVVNRLGAIKDP KSETGTRVGVVQYSHEGTFEAIQLDDEHIDSLSSFKEAVKNLEWIAGGTWTPSALKF AYDRLIKESRRQKTRVFAVVITDGRHDPRDDDLNLRALCDRDVTVTAIGIGDMFHEK HESENLYSIACDKPQQVRNMTLFSDLVAEKFIDDMEDVLCPPDQIVCPDLPCQTELS VAQCTQRPVDIVFLLDGSERLGEQNFHKARRFVEQVARRLTLARRDDDPLNARVAL LQFGGPGEQQVAFPLSHNLTAIHEALETQYLNSFSHVGAGVVHAINAIVRSRGGGA</p>

 Tel: 1-631-559-9269 1-516-512-3133

 Email: info@creative-biomart.com  Fax: 1-631-938-8127

 45-1 Ramsey Road, Shirley, NY 11967, USA

RRHAELSFVFLTDGVTGNDLHESAHSRMRKQNVVPTVLALGSDVDMDVLTTLTSLGD
RAAVFHEKDYDSLQPGFFDRFIRWIC

Applications	Enzyme-linked Immunoabsorbent Assay Western Blot (Recombinant protein) Antibody Production Protein Array
Notes	Best use within three months from the date of receipt of this protein.
Storage	Store at -80 centigrade. Aliquot to avoid repeated freezing and thawing.
Storage Buffer	50 mM Tris-HCl, 10 mM reduced Glutathione, pH=8.0 in the elution buffer.

GENE INFORMATION

Gene Name	COL6A2 collagen, type VI, alpha 2 [Homo sapiens]
Official Symbol	COL6A2
Synonyms	COL6A2; collagen, type VI, alpha 2; collagen alpha-2(VI) chain; collagen VI, alpha-2 polypeptide; human mRNA for collagen VI alpha-2 C-terminal globular domain; PP3610; FLJ46862; DKFZp586E1322;
Gene ID	1292
mRNA Refseq	NM_001849
Protein Refseq	NP_001840
MIM	120240

 Tel: 1-631-559-9269 1-516-512-3133

 Email: info@creative-biomart.com  Fax: 1-631-938-8127

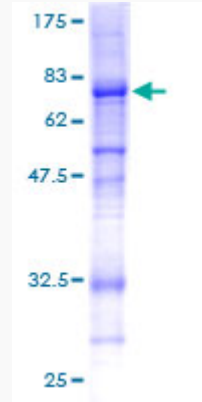
 45-1 Ramsey Road, Shirley, NY 11967, USA

UniProt ID

P12110

Quality Control

Testing:



12.5% SDS-PAGE Stained with Coomassie Blue.

 Tel: 1-631-559-9269 1-516-512-3133

 Email: info@creative-biomart.com  Fax: 1-631-938-8127

 45-1 Ramsey Road, Shirley, NY 11967, USA