

# Recombinant Human COL6A2 Protein, Myc/DDK-tagged, C13 and N15-labeled

**Cat. No.** COL6A2-2168H    **Lot. No.** (See product label)

## SPECIFICATION

<b>Product Overview</b>	COL6A2 MS Standard C13 and N15-labeled recombinant protein (NP_001840) with a C-terminal MYC/DDK tag, was expressed in HEK293 cells.
<b>Species</b>	Human
<b>Source</b>	HEK293
<b>Description</b>	This gene encodes one of the three alpha chains of type VI collagen, a beaded filament collagen found in most connective tissues. The product of this gene contains several domains similar to von Willebrand Factor type A domains. These domains have been shown to bind extracellular matrix proteins, an interaction that explains the importance of this collagen in organizing matrix components. Mutations in this gene are associated with Bethlem myopathy and Ullrich scleroatonic muscular dystrophy. Three transcript variants have been identified for this gene.
<b>Molecular Mass</b>	108.6 kDa
<b>AA Sequence</b>	MLQGTCSVLLWLGILGAIQAQQQEVISPDTERNNNCPEKTD CPIHVYFVLDTSESVT MQSPTDILLFHMKQFVPQFISQLQNEFYLDQVALSWRYGGLHFSDQVEVFSPPGSD RASFIKNLQGISSFRRTFTDCALANMTEQIRQDRSKGTVHFAVVITDGHVTGSPCG GIKLAERAREEGIRLFAVAPNQLKEQGLRDIASPHELYRNDYATMLPDSTEIDQD TINRIIKVMKHEAYGECYKVSCLEIPGPSGPKGYRGQKGAKGNMGEPGEPGQKGRQ GDPGIEGPIGFPGPKGVPGFKGEKGEFGADGRKGAPGLAGKNGTDGQKGLGRIG

 Tel: 1-631-559-9269    1-516-512-3133

 Email: [info@creative-biomart.com](mailto:info@creative-biomart.com)     Fax: 1-631-938-8127

 45-1 Ramsey Road, Shirley, NY 11967, USA



PPGCKGDPGNRGPDPGYGPEAGSPGERGDQGGKGDPRPGRRRGPPGEIGAKGSK  
 GYQGNNGAPGSPGVKGAKGGPGPRGPKGEPGRRGDPGTKGSPGSDGPKGEKGD  
 PGPEGPRGLAGEVGNKGAKGDRGLPGPRGPQALGEPGKQGSRGDPGDAGPRG  
 DSGQPGPKGDPGRPGFSYPGPRGAPGEKGEPPGPRGPEGGRGDFGLKGEPRKG  
 EKGEPADPGPPGEPGPRGPRGVPGEPEGPPGDPGLTECDVMTYVRETCGCCD  
 CEKRCGALDVVVIDSSESIGYTNFTLEKNFVINVVNRLGAIKDPKSETGTRVGVVQ  
 YSHEGTFEAIQLDDERIDSLSSFKEAVKNLEWIAGGTWTPSALKFAYDRLIKESRRQK  
 TRVFAVVITDGRHDPDRDDDLNLRALCDRDVTVAIGIGDMFHEKHESENLYSIACDKP  
 QQVRNMTLFSDLVAEKFIDDMEDVLCPPQIVCPDLPCQTELSVAQCTQRPVDIVFL  
 LDGSERLGEQNFHKARRFVEQVARRLTLARRDDDPLNARVALLQFGGPGEQQVAF  
 PLSHNLTAIHEALETQYLNSFSHVGAGVVHAINAIVRSRGGARRHAELSFVFLTDG  
 VTGNDSLHESAHSRMRKQNVVPTVLALGSDVDMDVLTTLTSLGDRAAVFHEKDYDSL  
 QPGFFDRFIRWICSGPTRTRPLEQKLISEEDLAANDILDYKDDDDKV

<b>Purity</b>	> 80% as determined by SDS-PAGE and Coomassie blue staining
<b>Stability</b>	Stable for 3 months from receipt of products under proper storage and handling conditions.
<b>Storage</b>	Store at -80 centigrade. Avoid repeated freeze-thaw cycles.
<b>Concentration</b>	50 µg/mL as determined by BCA
<b>Storage Buffer</b>	100 mM glycine, 25 mM Tris-HCl, pH 7.3.

## GENE INFORMATION

<b>Gene Name</b>	COL6A2 collagen type VI alpha 2 chain [ Homo sapiens (human) ]
<b>Official Symbol</b>	COL6A2

**Synonyms** COL6A2; collagen, type VI, alpha 2; collagen alpha-2(VI) chain; collagen VI, alpha-2 polypeptide; human mRNA for collagen VI alpha-2 C-terminal globular domain; PP3610; FLJ46862; DKFZp586E1322;

**Gene ID** 1292

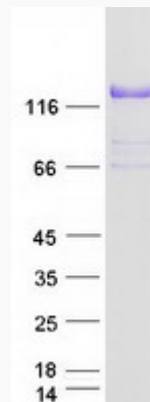
**mRNA Refseq** NM\_001849

**Protein Refseq** NP\_001840

**MIM** 120240

**UniProt ID** P12110

**SDS-PAGE**



 Tel: 1-631-559-9269 1-516-512-3133

 Email: [info@creative-biomart.com](mailto:info@creative-biomart.com)  Fax: 1-631-938-8127

 45-1 Ramsey Road, Shirley, NY 11967, USA