

Recombinant Human COL6A2 Protein, Myc/DDK-tagged, C13 and N15-labeled

Cat. No. COL6A2-2710H **Lot. No.** (See product label)

SPECIFICATION

Product Overview

COL6A2 MS Standard C13 and N15-labeled recombinant protein (NP_478054) with a C-terminal MYC/DDK tag, was expressed in HEK293 cells.

Species

Human

Source

HEK293

Description

This gene encodes one of the three alpha chains of type VI collagen, a beaded filament collagen found in most connective tissues. The product of this gene contains several domains similar to von Willebrand Factor type A domains. These domains have been shown to bind extracellular matrix proteins, an interaction that explains the importance of this collagen in organizing matrix components. Mutations in this gene are associated with Bethlem myopathy and Ullrich scleroatonic muscular dystrophy. Three transcript variants have been identified for this gene.

Molecular Mass

95.3 kDa

AA Sequence

MLQGTCSVLLLWGILGAIQAQQQEVISPDTERNNNCPEKTDCEPIHVYFVLDTSESVT
 MQSPTDILLFHMKQFVPQFISQLQNEFYLDQVALSWRYGGLHFSDQVEVFSPPGSD
 RASFIKNLQGISSFRRTFTDCALANMTEQIRQDRSKGTVHFAVVITDGHVTGSPCG
 GIKLQAERAREEGIRLFAVAPNQLKEQGLRDIASPHELYRNDYATMLPDSTEINQD
 TINRIIKVMKHEAYGECYKVSCLEIPGPSGPKGYRGQKGAKGNMGEPGEPGQKGRQ
 GDPGIEGPIGFPGPKGVPFGKGEKGEFGADGRKGGAPGLAGKNGTDGQKGLGRIG

 Tel: 1-631-559-9269 1-516-512-3133

 Email: info@creative-biomart.com  Fax: 1-631-938-8127

 45-1 Ramsey Road, Shirley, NY 11967, USA

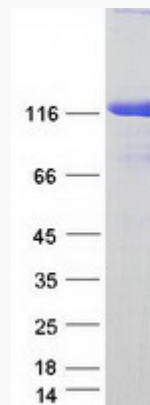
PPGCKGDPGNRGPDPGYGPEAGSPGERGDQGGKGDPRPGRRRGPPGEIGAKGSK
 GYQGNNGAPGSPGVKGAKGGPGPRGPKGEPGRRGDPGKSGSPGSDGPKGEKGD
 PGPEGPRGLAGEVGNKGAKGDRGLPGPRGPQGALGEPGKQGSRGDPGDAGPRG
 DSGQPGPKGDPGRPGFSYPGPRGAPGEKGEPPGPRGPEGGRGDFGLKGEPRKG
 EKGEPADPGPPGEPGPRGPRGVPGEPEGPPGDPGLTECDVMTYVRETCGCCD
 CEKRCGALDVVVIDSSESIGYTNFTLEKNFVINVVNRLGAIKDPKSETGTRVGVVQ
 YSHEGTFEAIQLDDEHIDSLSSFKEAVKNLEWIAGGTWTPSALKFAYDRLIKESRRQK
 TRVFAVVITDGRHDPDRDDDLNLRALCDRDVTVAIGIGDMFHEKHESENLYSIACDKP
 QQVRNMTLFSDLVAEKFIDDMEDVLCPPQIVCPDLPCQTDAPWPGGEPVTFRLT
 EEGPDATFPRTIPLIQQLLNATELTQDPAAYSQVLVAVLVYTAERAKFATGVERQDWM
 ELFIDTFKLVHRDIVGDPETALALCSGPTRRRLEQKLISEEDLAANDILDYKDDDDKV

Purity	> 80% as determined by SDS-PAGE and Coomassie blue staining
Stability	Stable for 3 months from receipt of products under proper storage and handling conditions.
Storage	Store at -80 centigrade. Avoid repeated freeze-thaw cycles.
Concentration	50 µg/mL as determined by BCA
Storage Buffer	100 mM glycine, 25 mM Tris-HCl, pH 7.3.

GENE INFORMATION

Gene Name	COL6A2 collagen type VI alpha 2 chain [Homo sapiens (human)]
Official Symbol	COL6A2
Synonyms	COL6A2; collagen, type VI, alpha 2; collagen alpha-2(VI) chain; collagen VI, alpha-2 polypeptide; human mRNA for collagen VI alpha-2 C-terminal globular domain;

PP3610; FLJ46862; DKFZp586E1322;

Gene ID 1292**mRNA Refseq** NM_058174**Protein Refseq** NP_478054**MIM** 120240**UniProt ID** P12110**SDS-PAGE** Tel: 1-631-559-9269 1-516-512-3133 Email: info@creative-biomart.com  Fax: 1-631-938-8127 45-1 Ramsey Road, Shirley, NY 11967, USA