

## Recombinant Human COL6A2 protein(254-400aa), His-GST&Myc-tagged

Cat. No. COL6A2-532H Lot. No. (See product label)

### SPECIFICATION

<b>Product Overview</b>	Recombinant Human COL6A2 protein(P12110)(254-400aa), fused with N-terminal His and GST and C-terminal Myc tag, was expressed in E. coli.
<b>Species</b>	Human
<b>Source</b>	E.coli
<b>ProteinLength</b>	254-400aa
<b>Form</b>	If the delivery form is liquid, the default storage buffer is Tris/PBS-based buffer, 5%-50% glycerol. If the delivery form is lyophilized powder, the buffer before lyophilization is Tris/PBS-based buffer, 6% Trehalose, pH 8.0.
<b>Molecular Mass</b>	35.2 kDa
<b>Purity</b>	Greater than 85% as determined by SDS-PAGE.
<b>Storage</b>	Store at -20°C/-80°C upon receipt, aliquoting is necessary for multiple use. Avoid repeated freeze-thaw cycles.
<b>Reconstitution</b>	We recommend that this vial be briefly centrifuged prior to opening to bring the contents to the bottom. Please reconstitute protein in deionized sterile water to a concentration of 0.1-1.0 mg/mL. We recommend to add 5-50% of glycerol (final concentration) and aliquot for long-term storage at -20°C/-80°C.

 Tel: 1-631-559-9269 1-516-512-3133

 Email: [info@creative-biomart.com](mailto:info@creative-biomart.com)  Fax: 1-631-938-8127

 45-1 Ramsey Road, Shirley, NY 11967, USA



**AA Sequence** IPGPSGPKGYRGQKGAKGNMGEPGEPGQKGRQGDPIEGPIGFPGPKGVPGFKG  
EKGEFGADGRKGAPGLAGKNGTDGQKGLGRIGPPGCKGDPGNRGPDPGYPGGEAG  
SPGERGDQGGKGDPRPGRRGPPGEIGAKGSKGYQGNSG

## GENE INFORMATION

**Gene Name** COL6A2 collagen, type VI, alpha 2 [ Homo sapiens ]

**Official Symbol** COL6A2

**Synonyms** COL6A2; collagen, type VI, alpha 2; collagen alpha-2(VI) chain; collagen VI, alpha-2 polypeptide; human mRNA for collagen VI alpha-2 C-terminal globular domain; PP3610; FLJ46862; DKFZp586E1322;

**Gene ID** 1292

**mRNA Refseq** NM\_001849

**Protein Refseq** NP\_001840

**MIM** 120240

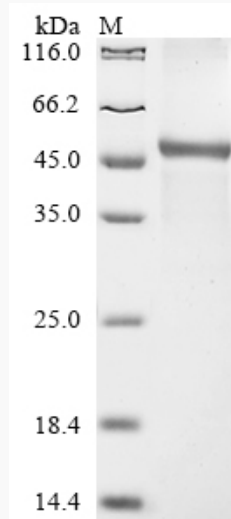
**UniProt ID** P12110

 Tel: 1-631-559-9269 1-516-512-3133

 Email: [info@creative-biomart.com](mailto:info@creative-biomart.com)  Fax: 1-631-938-8127

 45-1 Ramsey Road, Shirley, NY 11967, USA

**SDS-PAGE**



 Tel: 1-631-559-9269 1-516-512-3133

 Email: [info@creative-biomart.com](mailto:info@creative-biomart.com)  Fax: 1-631-938-8127

 45-1 Ramsey Road, Shirley, NY 11967, USA