

## Recombinant Human COL8A1 Protein (Gly28-Met744), C-His tagged

Cat. No. COL8A1-1770H Lot. No. (See product label)

### SPECIFICATION

<b>Product Overview</b>	Recombinant human COL8A1 (Gly28-Met744) fused with C-terminal His tag was expressed in Mammalian cells.
<b>Species</b>	Human
<b>Source</b>	Mammalian Cells
<b>ProteinLength</b>	Gly28-Met744
<b>Form</b>	Lyophilized powder/frozen liquid
<b>Molecular Mass</b>	75.9 kDa
<b>Purity</b>	>90% as determined by SDS-PAGE
<b>Notes</b>	For research use only.
<b>Storage</b>	Use a manual defrost freezer and avoid repeated freeze thaw cycles. Store at 2 to 8 centigrade for one week. Store at -20 to -80 centigrade for twelve months from the date of receipt.
<b>Storage Buffer</b>	Supplied as solution form in PBS or lyophilized from PBS.
<b>Reconstitution</b>	Reconstitute in sterile water for a stock solution.

 Tel: 1-631-559-9269 1-516-512-3133

 Email: [info@creative-biomart.com](mailto:info@creative-biomart.com)  Fax: 1-631-938-8127

 45-1 Ramsey Road, Shirley, NY 11967, USA

**Shipping** They are shipped out with dry ice/blue ice unless customers require otherwise.

## GENE INFORMATION

**Gene Name** COL8A1 collagen, type VIII, alpha 1 [ Homo sapiens (human) ]

**Official Symbol** COL8A1

**Synonyms** COL8A1; collagen, type VIII, alpha 1; C3orf7, chromosome 3 open reading frame 7; collagen alpha-1 (VIII) chain; MGC9568; endothelial collagen; collagen VIII, alpha-1 polypeptide; cell proliferation-inducing protein 41; smooth muscle cell-expressed and macrophage conditioned medium-induced protein smag-64; C3orf7;

**Gene ID** 1295

**mRNA Refseq** NM\_001850

**Protein Refseq** NP\_001841

**MIM** 120251

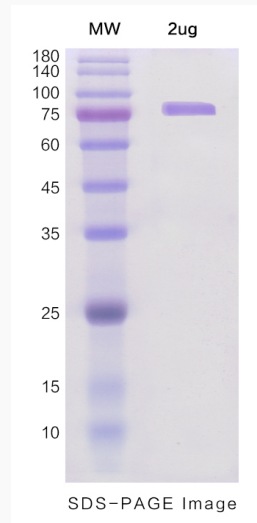
**UniProt ID** P27658

 Tel: 1-631-559-9269 1-516-512-3133

 Email: [info@creative-biomart.com](mailto:info@creative-biomart.com)  Fax: 1-631-938-8127

 45-1 Ramsey Road, Shirley, NY 11967, USA

**SDS-PAGE**



 Tel: 1-631-559-9269 1-516-512-3133

 Email: [info@creative-biomart.com](mailto:info@creative-biomart.com)  Fax: 1-631-938-8127

 45-1 Ramsey Road, Shirley, NY 11967, USA