

Recombinant Human COL8A1 protein, His-SUMO-tagged

Cat. No. COL8A1-4534H Lot. No. (See product label)

SPECIFICATION

Product Overview	Recombinant Human COL8A1 protein(P27658)(572-744aa), fused with N-terminal His tag and SUMO tag, was expressed in E.coli.
Species	Human
Source	E.coli
ProteinLength	572-744aa
Form	If the delivery form is liquid, the default storage buffer is Tris/PBS-based buffer, 5%-50% glycerol. If the delivery form is lyophilized powder, the buffer before lyophilization is Tris/PBS-based buffer, 6% Trehalose, pH 8.0.
Molecular Mass	31.9 kDa
Purity	Greater than 90% as determined by SDS-PAGE.
Storage	Store at -20°C/-80°C upon receipt, aliquoting is necessary for mutiple use. Avoid repeated freeze-thaw cycles.
Reconstitution	We recommend that this vial be briefly centrifuged prior to opening to bring the contents to the bottom. Please reconstitute protein in deionized sterile water to a concentration of 0.1-1.0 mg/mL. We recommend to add 5-50% of glycerol (final concentration) and aliquot for long-term storage at -20°C/-80°C.

 Tel: 1-631-559-9269 1-516-512-3133

 Email: info@creative-biomart.com  Fax: 1-631-938-8127

 45-1 Ramsey Road, Shirley, NY 11967, USA

AA Sequence

AVMPPTPPPQGEYLPDMGLGIDGVKPPHAYGAKKKGKNGGPAYEMPAFTAELTAPF
 PPVGAPVKFNKLLYNGRQNYNPQTGIFTCEVPGVYFYFAYHVHCKGGNVWVALFKN
 NEPVMYTYDEYKKGFLDQASGSVLLLLRPGDRVFLQMPSEQAAGLYAGQYVHSSF
 SGYLLYPM

GENE INFORMATION

Gene Name [COL8A1 collagen, type VIII, alpha 1 \[Homo sapiens \]](#)

Official Symbol [COL8A1](#)

Synonyms

COL8A1; collagen, type VIII, alpha 1; C3orf7, chromosome 3 open reading frame 7; collagen alpha-1(VIII) chain; MGC9568; endothelial collagen; collagen VIII, alpha-1 polypeptide; cell proliferation-inducing protein 41; smooth muscle cell-expressed and macrophage conditioned medium-induced protein smag-64; C3orf7;

Gene ID [1295](#)

mRNA Refseq [NM_001850](#)

Protein Refseq [NP_001841](#)

MIM [120251](#)

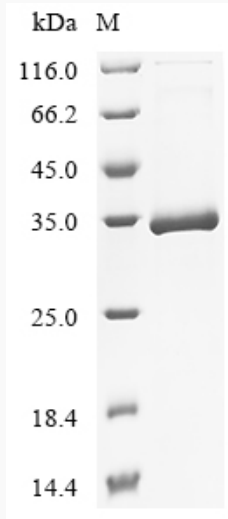
UniProt ID [P27658](#)

 Tel: 1-631-559-9269 1-516-512-3133

 Email: info@creative-biomart.com  Fax: 1-631-938-8127

 45-1 Ramsey Road, Shirley, NY 11967, USA

SDS-PAGE



 Tel: 1-631-559-9269 1-516-512-3133

 Email: info@creative-biomart.com  Fax: 1-631-938-8127

 45-1 Ramsey Road, Shirley, NY 11967, USA