

Recombinant Human COL8A1 protein, His-tagged

Cat. No. COL8A1-5633H Lot. No. (See product label)

SPECIFICATION

Product Overview	Recombinant Human COL8A1 protein(P27658)(572-744aa), fused with C-terminal His tag, was expressed in Yeast.
Species	Human
Source	Yeast
ProteinLength	572-744aa
Tag	C-His
Form	If the delivery form is liquid, the default storage buffer is Tris/PBS-based buffer, 5%-50% glycerol. If the delivery form is lyophilized powder, the buffer before lyophilization is Tris/PBS-based buffer, 6% Trehalose, pH 8.0.
Molecular Mass	20.0 kDa
Purity	Greater than 85% as determined by SDS-PAGE.
Storage	Store at -20°C/-80°C upon receipt, aliquoting is necessary for mutiple use. Avoid repeated freeze-thaw cycles.
Reconstitution	We recommend that this vial be briefly centrifuged prior to opening to bring the contents to the bottom. Please reconstitute protein in deionized sterile water to a concentration of 0.1-1.0 mg/mL. We recommend to add 5-50% of glycerol (final

 Tel: 1-631-559-9269 1-516-512-3133

 Email: info@creative-biomart.com  Fax: 1-631-938-8127

 45-1 Ramsey Road, Shirley, NY 11967, USA

concentration) and aliquot for long-term storage at -20°C/-80°C.

AA Sequence

AVMPPTPPPQGEYLPDMGLGIDGVKPPHAYGAKKGKNGGPAYEMPAFTAELTAPF
 PPVGAPVKFNKLLYNGRQNYNPQTGIFTCEVPGVYFYFAYHVHCKGGNVWVALFKN
 NEPVMYTYDEYKKGFLDQASGSVLLLLRPGDRVFLQMPSEQAAGLYAGQYVHSSF
 SGYLLYPM

GENE INFORMATION

Gene Name [COL8A1 collagen, type VIII, alpha 1 \[Homo sapiens \]](#)

Official Symbol [COL8A1](#)

Synonyms COL8A1; collagen, type VIII, alpha 1; C3orf7, chromosome 3 open reading frame 7; collagen alpha-1(VIII) chain; MGC9568; endothelial collagen; collagen VIII, alpha-1 polypeptide; cell proliferation-inducing protein 41; smooth muscle cell-expressed and macrophage conditioned medium-induced protein smag-64; C3orf7;

Gene ID [1295](#)

mRNA Refseq [NM_001850](#)

Protein Refseq [NP_001841](#)

MIM [120251](#)

UniProt ID [P27658](#)

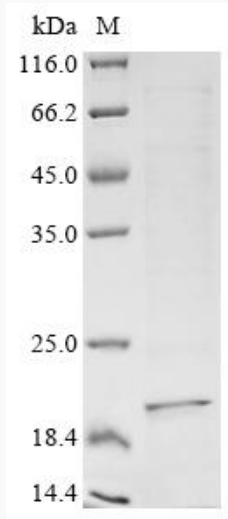
 Tel: 1-631-559-9269 1-516-512-3133

 Email: info@creative-biomart.com  Fax: 1-631-938-8127

 45-1 Ramsey Road, Shirley, NY 11967, USA



SDS-PAGE



Tel: 1-631-559-9269 1-516-512-3133

Email: info@creative-biomart.com Fax: 1-631-938-8127

45-1 Ramsey Road, Shirley, NY 11967, USA