

Recombinant Human COL8A2 Protein, GST-tagged

Cat. No. COL8A2-1661H Lot. No. (See product label)

SPECIFICATION

Product Overview Human COL8A2 full-length ORF (AAH96296.1, 1 a.a. - 427 a.a.) recombinant protein with GST-tag at N-terminal.

Species Human

Source Wheat Germ

Description This gene encodes the alpha 2 chain of type VIII collagen. This protein is a major component of the basement membrane of the corneal endothelium and forms homo- or heterotrimers with alpha 1 (VIII) type collagens. Defects in this gene are associated with Fuchs endothelial corneal dystrophy and posterior polymorphous corneal dystrophy type 2. Alternative splicing results in multiple transcript variants. [provided by RefSeq, Jun 2014]

Molecular Mass 68.9 kDa

AA Sequence

```

MLGTLTPLSSLLLLLLVVLVLCGPRASSGGGAGGAAGYAPVKYIQPMQKGPVGPFF
REGKGQYLEMPLPLLPMDLKGEPGPPGKPGPRGPPGPPGFPGKPGMGKPLHGQ
PGPAGPPGFSRMGKAGPPGLPGKVGPQGPPGLRGEPIRGDQGLRPPGPPGLP
GPSGITIPGKPGAQQVPGPPGFQGEPPGQGEPPGDRGLKGDNGVGPGLPGA
PGQGGAPGPPGLPGPAGLGKPLDGLPGAPGDKGESGPPGAFDETGIAGLHLPNG
GVEGAVLGKGGKPKQFGLGELSAHATPAFTAVLTSPFPASGMPVKFDRTLYNGHSGY
NPATGIFTCPVGGVYFYFAYHVHVKGNTNVWVALYKNNVPATYTYDEYKKGYLDAQSG
GAVLQLRPNDQVWVQMPDQANGLYSTEYIHSSFSGFLLCPT

```

 Tel: 1-631-559-9269 1-516-512-3133

 Email: info@creative-biomart.com  Fax: 1-631-938-8127

 45-1 Ramsey Road, Shirley, NY 11967, USA

Applications	Enzyme-linked Immunoabsorbent Assay Western Blot (Recombinant protein) Antibody Production Protein Array
Notes	Best use within three months from the date of receipt of this protein.
Storage	Store at -80 centigrade. Aliquot to avoid repeated freezing and thawing.
Storage Buffer	50 mM Tris-HCl, 10 mM reduced Glutathione, pH=8.0 in the elution buffer.
GENE INFORMATION	
Gene Name	COL8A2 collagen, type VIII, alpha 2 [Homo sapiens]
Official Symbol	COL8A2
Synonyms	COL8A2; collagen, type VIII, alpha 2; FECD; collagen alpha-2(VIII) chain; PPCD; PPCD2; endothelial collagen; collagen VIII, alpha-2 polypeptide; dJ665N4.1 (collagen type VIII alpha 2); FECD1; FLJ00201; MGC116970; MGC116972;
Gene ID	1296
mRNA Refseq	NM_005202
Protein Refseq	NP_005193
MIM	120252
UniProt ID	P25067

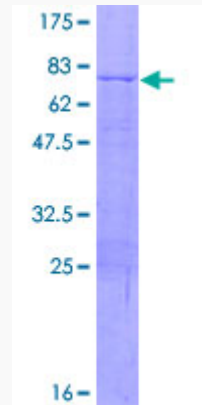
 Tel: 1-631-559-9269 1-516-512-3133

 Email: info@creative-biomart.com  Fax: 1-631-938-8127

 45-1 Ramsey Road, Shirley, NY 11967, USA

Quality Control

Testing:



12.5% SDS-PAGE Stained with Coomassie Blue.

 Tel: 1-631-559-9269 1-516-512-3133

 Email: info@creative-biomart.com  Fax: 1-631-938-8127

 45-1 Ramsey Road, Shirley, NY 11967, USA