

Recombinant Human COL8A2 Protein, Myc/DDK-tagged, C13 and N15-labeled

Cat. No. COL8A2-4491H Lot. No. (See product label)

SPECIFICATION

Product Overview

COL8A2 MS Standard C13 and N15-labeled recombinant protein (NP_005193) with a C-terminal MYC/DDK tag, was expressed in HEK293 cells.

Species

Human

Source

HEK293

Description

This gene encodes the alpha 2 chain of type VIII collagen. This protein is a major component of the basement membrane of the corneal endothelium and forms homo- or heterotrimers with alpha 1 (VIII) type collagens. Defects in this gene are associated with Fuchs endothelial corneal dystrophy and posterior polymorphous corneal dystrophy type 2. Alternative splicing results in multiple transcript variants.

Molecular Mass

67.24 kDa

AA Sequence

MLGTLTPLSSLLLLLLVVLGCGPRASSGGGAGGAAGYAPVKYIQPMQKGPVGPFF
REGKGQYLEMPLPLLPMDLKGEPGPPGKPGPRGPPGPPGFPGKPGMGKPLHGQ
PGPAGPPGFSRMGKAGPPGLPGKVGPQGPPGLRGEPIRGDQGLRPPGPPGLP
GPSGITIPGKPGAQGVPPGPFQGEPPGQGEPPGDRGLKGDNGVGPGLPGA
PGQGGAPGPPGLPGPAGLGPGLDGLPGAPGDKGESGPPGVPPRGEPPGAVGPK
GPPGVDGVGVPGAAGLPGPQGPSGAKGEPGTRGPPGLIGPTGYGMPGLPGPKGD
RGPAGVPGLLGDREGEDEGEPPGQGPQGLGGPPGLPGSAGLPGRRGPPGPKG
EAGPGGPPGVPIRGDQGPSGLAGKPGVPPERGLPGAHGPPGPTGPKGEPGFTG

Tel: 1-631-559-9269 1-516-512-3133

Email: info@creative-biomart.com Fax: 1-631-938-8127

45-1 Ramsey Road, Shirley, NY 11967, USA

RPGGPGVAGALGQKGDGLPGQPGLRGPSGIPGLQGPAIGPQGLPGLKGEPL
 PGPPGEGRAGEPGTAGPTGPPGVPGSPGITGPPGPPGPPGAPGAFDETGIAG
 LHLPNGGVEGAVLGKGGKQFGLGELSAHATPAFTAVLTSPFPASGMPVKFDRTLY
 NGHSGYNPATGIFTCPVGGVYYYFAYHVHVKGTNVWVALYKNNVPATYTYDEYKKG
 YLDQASGGAVLQLRPNDQVWVQMPDQANGLYSTEYIHSSFSGFLLCPTTRTRPLE
 QKLISEEDLAANDILDYKDDDDKV

Purity	> 80% as determined by SDS-PAGE and Coomassie blue staining
Stability	Stable for 3 months from receipt of products under proper storage and handling conditions.
Storage	Store at -80 centigrade. Avoid repeated freeze-thaw cycles.
Concentration	50 µg/mL as determined by BCA
Storage Buffer	100 mM glycine, 25 mM Tris-HCl, pH 7.3.

GENE INFORMATION

Gene Name	COL8A2 collagen type VIII alpha 2 chain [Homo sapiens (human)]
Official Symbol	COL8A2
Synonyms	COL8A2; collagen, type VIII, alpha 2; FECD; collagen alpha-2(VIII) chain; PPCD; PPCD2; endothelial collagen; collagen VIII, alpha-2 polypeptide; dJ665N4.1 (collagen type VIII alpha 2); FECD1; FLJ00201; MGC116970; MGC116972;
Gene ID	1296
mRNA Refseq	NM_005202

 Tel: 1-631-559-9269 1-516-512-3133

 Email: info@creative-biomart.com  Fax: 1-631-938-8127

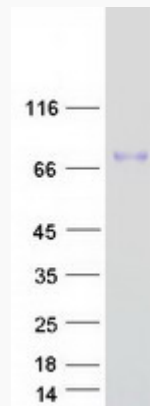
 45-1 Ramsey Road, Shirley, NY 11967, USA

Protein Refseq NP_005193

MIM 120252

UniProt ID P25067

SDS-PAGE



 Tel: 1-631-559-9269 1-516-512-3133

 Email: info@creative-biomart.com  Fax: 1-631-938-8127

 45-1 Ramsey Road, Shirley, NY 11967, USA