

Recombinant Human COLEC10 Protein, GST-tagged

Cat. No. COLEC10-1666H **Lot. No.** (See product label)

SPECIFICATION

Product Overview	Human COLEC10 full-length ORF (NP_006429.1, 1 a.a. - 277 a.a.) recombinant protein with GST-tag at N-terminal.
Species	Human
Source	Wheat Germ
Description	This gene encodes a member of the C-lectin family, proteins that possess collagen-like sequences and carbohydrate recognition domains. The other members of this family are secreted proteins and bind to carbohydrate antigens on microorganisms facilitating their recognition and removal. This gene product is a cytosolic protein, a characteristic that suggests that it may have different biological functions than other C-lectins. [provided by RefSeq, Jul 2008]
Molecular Mass	57.1 kDa
AA Sequence	MNGFASLLRRNQFILLVLFLLQIQSLGLDIDSRPTAEVCATHTISPGPKGDDGEKGDP GEEGKHGKVGGRMGPKGIKELGDMGDQGNIGKTGPIGKKGDKGEKGLLGIPGEKG KAGTVCDGCRYRKFVGLDISIARLKTSMKFVKNVIAGIRETEEFYIVQEEKNYRE SLTHCRIRGGMLAMPKDEAANTLIADYVAKSGFFRVFIGVNDLEREGQYMFTDNTPL QNYSNWNEGEPSPDPYGHEDCVEMLSSGRWNDTECHLTMYFVCEFIKKKK
Applications	Enzyme-linked Immunoabsorbent Assay Western Blot (Recombinant protein) Antibody Production

 Tel: 1-631-559-9269 1-516-512-3133

 Email: info@creative-biomart.com  Fax: 1-631-938-8127

 45-1 Ramsey Road, Shirley, NY 11967, USA

Protein Array

Notes	Best use within three months from the date of receipt of this protein.
Storage	Store at -80 centigrade. Aliquot to avoid repeated freezing and thawing.
Storage Buffer	50 mM Tris-HCl, 10 mM reduced Glutathione, pH=8.0 in the elution buffer.

GENE INFORMATION

Gene Name	COLEC10 collectin sub-family member 10 (C-type lectin) [Homo sapiens]
Official Symbol	COLEC10
Synonyms	COLEC10; collectin sub-family member 10 (C-type lectin); collectin-10; CL L1; CL-34; collectin 34; collectin-34; collectin liver 1; collectin liver protein 1; CLL1; MGC118794; MGC118795;
Gene ID	10584
mRNA Refseq	NM_006438
Protein Refseq	NP_006429
MIM	607620
UniProt ID	Q9Y6Z7

 Tel: 1-631-559-9269 1-516-512-3133

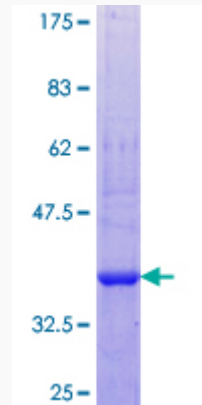
 Email: info@creative-biomart.com  Fax: 1-631-938-8127

 45-1 Ramsey Road, Shirley, NY 11967, USA



Quality Control

Testing:



12.5% SDS-PAGE Stained with Coomassie Blue.

Tel: 1-631-559-9269 1-516-512-3133

Email: info@creative-biomart.com Fax: 1-631-938-8127

45-1 Ramsey Road, Shirley, NY 11967, USA